



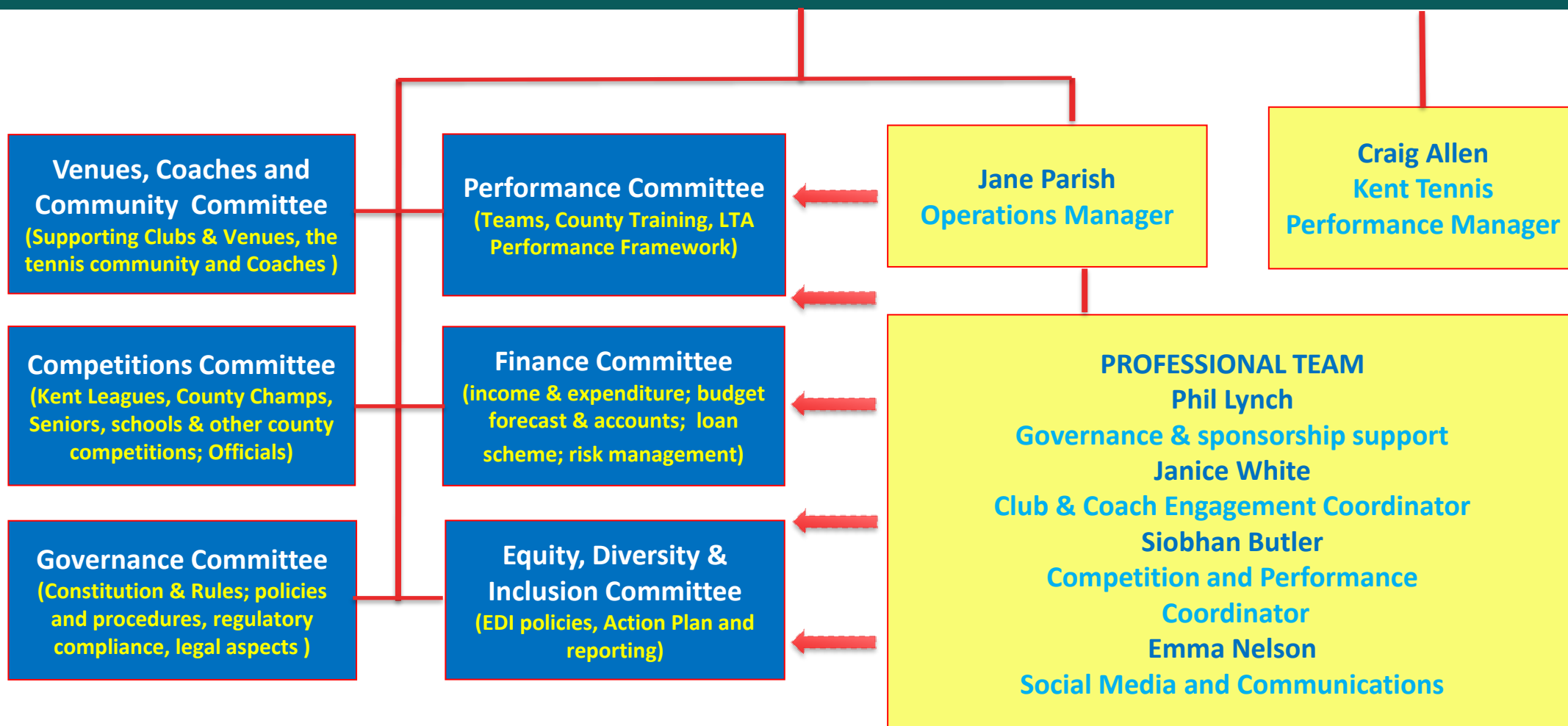
**KENT**  
TENNIS

COMMITTEE MEMBERS 2025

# Kent Tennis Committee Structure

## KENT TENNIS BOARD OF TRUSTEES

Overall strategy, Kent Tennis Plan, Safeguarding, Kent Professional Team, Equity Inclusion and Diversity



# BOARD OF TRUSTEES 2025

The proposed Board for 2025 is shown below, with new members and responsibilities in red.

Board Member	Responsibility
Nigel Jordan	Chair of Board
Monica Kuszneruk	Treasurer
Charlotte Cornell	Secretary & Governance
Anna Wilson	Padel
Keith Gill	LTA Councillor; Inclusion Champion
Luke House	Coaches, Coach Education
Andy Candler	Clubs, Parks and Community Venues
Jacqs Darby	Performance
Jason Sigba	EDI expert
Paolo Cuomo	Disciplinary Officer

# COMMITTEES AND CHAIRS – 2025

The committees report to the Board and each includes at least one current Board member. The Committee chairs are responsible for all aspects of the governance of their committee including succession plans.

Committee	Chair
Performance	Jacqs Darby
Competitions	Jason Baker supported by Paolo Cuomo
Venues, Coaches and Community	Andy Candler
Governance	Charlotte Cornell
Equity, Diversity & Inclusion	Keith Gill
Finance	Monika Kuszneruk

The Board retains overall responsibility for safeguarding and delivery against the annual Kent Plan. It also has overall responsibility for the financial and risk management of the organisation.

# PERFORMANCE COMMITTEE

Responsible for all aspects of performance in the county, including County Teams across all ages, County Training and linking in with the LTA'S Performance Team.

## Members

Jacqs Darby (Chair) - Board Member responsible for performance

Craig Allen - Kent Tennis Performance Manager

Siobhan Butler - Competitions and Performance Co-Ordinator

Alastair Filmer – Performance Tennis, Adult and O35 Teams

John Watton - Seniors Teams

Simon Grieve - Junior Coach

# COMPETITIONS COMMITTEE

Responsible for county run competitions, including Kent Leagues, schools competitions, County Championships & Seniors county winter competition.

## Members

Jason Baker (Chair) – Referee & Officials Network

Siobhan Butler – Competitions & Performance Coordinator

Paolo Cuomo – Board member & Disciplinary Officer

Lisa King – District League Representative

Vanessa Webb – District League Representative and an Official

Andy Lucey – Officials representative

Keeley Wicks – Kent Inter-Club League Representative

Nigel Jordan – Board representative and Seniors Player representative

Alex Woolmington – Coaching representative

Estella Bryan – Parent representative

Karen Hodgson – Schools representative



# VENUES, COACHES AND COMMUNITY COMMITTEE

Responsible for supporting venues and the community in their effective running and attracting people to tennis.

## Members

Andy Candler (Chair) - Board Member responsible for venues

Janice White - Club and Coach Engagement Co-ordinator

Nigel Jordan - Open Court Lead

Anna Wilson - Board Member responsible for Padel

Daniel Hodgson - Youth Development

Luke House - Board member responsible for Coaches Network

Emma Nelson - Kent Venue Representative – Oakwood

Sarah Langford - Kent Venue Representative (Bromley Tennis Centre)

Mimi Hoffman - Kent Venue Representative (Horsmonden)

Mary Evans - Kent Tennis Awards

Vanessa Oakes - Kent Venue Representative – Whitstable

Jason Sigba – Inclusion and Diversity

Rob Slater – Kent Venue Representative-Meopham

# GOVERNANCE COMMITTEE

Responsible for ensuring effective governance is in place across all aspects of the CIO, including policies and procedures, constitution and compliance with the relevant rules and regulations including the LTA's County Governance Framework.

## Members

Charlotte Cornell (Chair) Board member, Governance Secretary

Phil Lynch - Governance support

John Darby - Life Vice-President

Andrew Hunter - Legal Representative

Nigel Jordan - CIO Chair & Board Member,

Jane Parish - Operations Manager

Jason Baker - Chair of Competitions



# EQUITY, DIVERSITY & INCLUSION COMMITTEE

Responsible for ensuring Kent Tennis achieves its mission to transform tennis for communities in Kent; making tennis relevant, accessible welcoming and enjoyable.

## Members

Keith Gill (Chair) – Board Member, Inclusion Champion, LTA Councillor

Andy Candler – Board member responsible for clubs, community & venues

Nigel Jordan – CIO Chair and Board Member; Open Court Lead

Jason Sigba – Board Member and EDI expert

Jane Parish – Operations Manager, Kent Tennis

Tom Defrates – Disability Tennis expert

Luke House – Coaches

Daniel Hodgson - Youth Group

Cheryl Ewan – Data analyst

Paul Obey – Disability interest

Emma Nelson – Communications Co-ordinator, Kent Tennis

Rob Slater – Venue and Community Engagement

# FINANCE COMMITTEE

Responsible for ensuring the day-to-day finances of Kent Tennis are managed effectively, including appropriate processes and controls in place and agreement of any County loans. Overarching responsibility lies with the Board of Trustees.

## Members

Monika Kuszneruk (Chair) – Treasurer

Keith Gill - Sponsorship

Tony Fisher - Finance adviser, Supporter's Club

Paul Obey – Member of loan panel

Pamela Butler – County loan scheme