



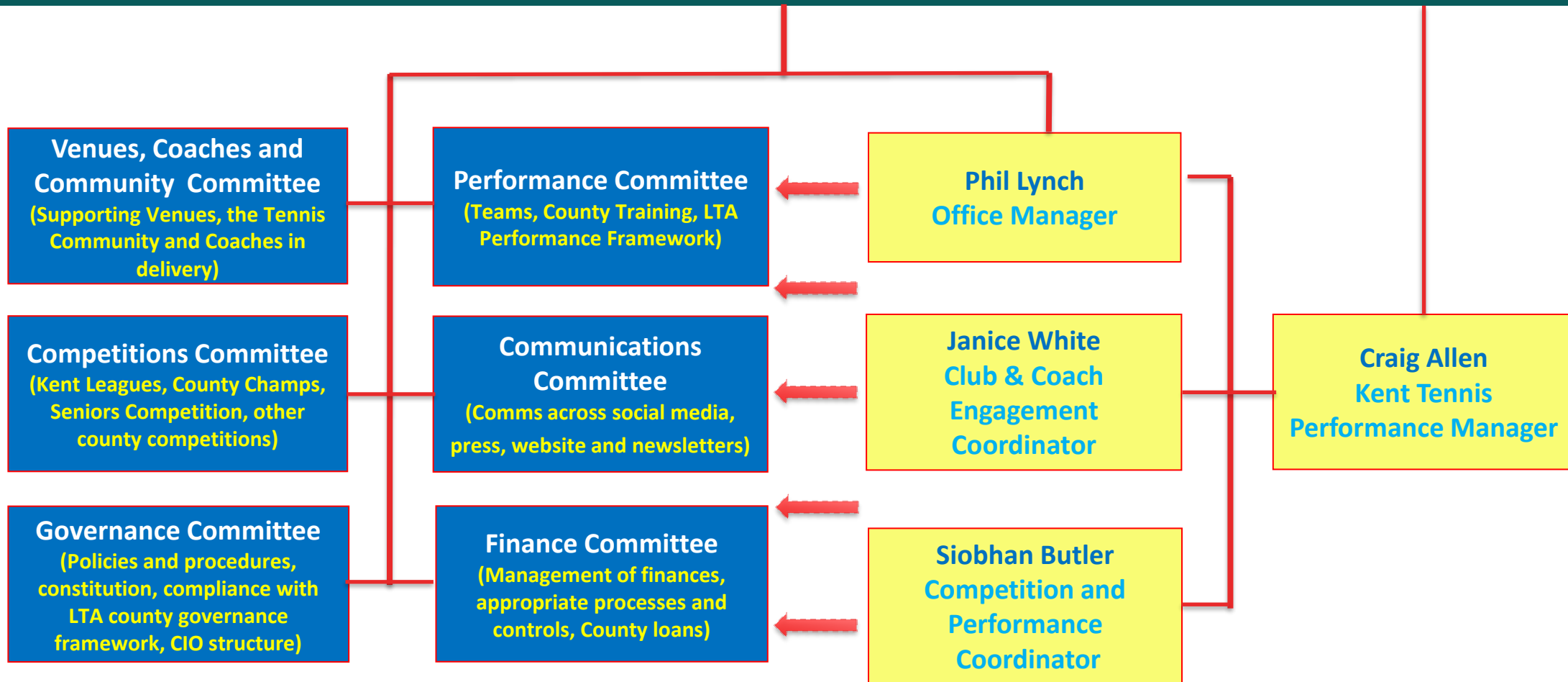
**KENT**  
TENNIS

COMMITTEE MEMBERS 2023

# Kent Tennis Committee Structure

## KENT TENNIS BOARD OF TRUSTEES

Overall strategy, Kent Tennis Plan, Safeguarding, Kent Office Team, Inclusion and Diversity



# BOARD 2023

The proposed Board for 2023 is shown below, with new members and responsibilities in red.

Board Member	Responsibility
Malcolm Smith	Chair of Board, Performance <b>and Workforce</b>
John Ratcliffe	Venues and Community
Nigel Jordan	Treasurer
Anna Wilson	Padel and <b>Annual Plan</b>
<b>Keith Gill</b>	<b>LTA Councillor and Competitions</b>
<b>Luke House</b>	<b>Coaches, Safeguarding and Inclusion</b>
<b>Clare Lilley</b>	<b>Communications</b>
<b>Vacancy</b>	<b>Secretary and Governance</b>

**Note: Under current constitution maximum number of board members is 8. Under CIO it will be 10.**

# COMMITTEES AND CHAIRS – 2023

The following committees will be set up with chairs as indicated. All the committees will report to the Board and must have at least one current Board member. The Committee chairs are responsible for all aspects of the governance of their committee including succession plans.

Committee	Chair
Performance	Malcolm Smith
Competitions	Jason Baker
Venues, Coaches and Community	John Ratcliffe
Governance	TBA (Jason Baker in interim)
Communications	Clare Lilley
Finance	Nigel Jordan

**Note: The Board will retain responsibility for safeguarding, diversity and inclusion and the completion and delivery against the Kent Plan. All Committees will help deliver in these areas and report to the Board on the actions they have taken.**

# PERFORMANCE COMMITTEE

Responsible for all aspects of performance in the County, including County Teams across all ages, Training and linking in with the LTA'S Performance Team.

## Members

**Malcolm Smith** (Chair) - Board Member responsible for performance

**Craig Allen** - Kent Tennis Performance Manager

**Siobhan Butler** - Performance and Competitions Co-ordinator

**Jacqueline Darby** - Adult and 35 Teams

**John Watton** - Seniors Teams

Simon Grieve - Junior Coach

Alastair Filmer – Performance Tennis

**Note: Under current structure, Board and Council members are shaded in blue. Council members in green. Staff members in yellow.**

# COMPETITIONS COMMITTEE

Responsible for county run competitions, including Kent Leagues, schools competitions, County Championships, seniors county winter competition.

## Members

**Jason Baker** (Chair) – Board Member Responsible for Competitions, Officials Network

**Siobhan Butler** – Competitions & Performance Coordinator

**Keeley Wicks** – Kent Inter-Club League Representative

**Lisa King** – District League Representative

**Vanessa Webb** – District League Representative and an Official

**Graham Silvester** – Officials representative

Andy Lucey – Officials representative

**Keith Gill** – Board representative and Seniors Player representative

Luke Hoffman – Adult player representative

**Karen Hodgson** – Schools representative

# VENUES, COACHES AND COMMUNITY COMMITTEE

- Responsible for supporting venues and the community in their effective running and attracting people to tennis.

## Members

**John Ratcliffe** (Chair) - Board Member responsible for venues

**Janice White** - Club and Coach Engagement Co-Ordinator

**Tom Defrates** - Disability tennis

**Anna Wilson** – Board Member responsible for Padel and Projects

**Emre Saridogan** – Youth Development

**Luke House** – Coaches Network

**Mary Evans** – Kent Tennis Awards, Schools Tennis

**Sarah Langford** – Kent Venue Representative 1 (Bromley Tennis Centre)

**Mimi Hoffman** – Kent Venue Representative 2 (Horsmonden)

Emma Nelson – Kent Venue Representative 3 (Oakwood)

Andy Candler – Kent Venue Representative 4 (Meopham)

**Note: Under current structure, Board and Council members are shaded in blue. Council members in green. Staff members in yellow.**



# GOVERNANCE COMMITTEE

- Responsible for ensuring effective governance is in place across all aspects of the association, including policies and procedures, constitution and compliance with the relevant rules and regulations including the LTA's County Governance Framework. Will also assume responsibility for the CIO governance once approved.

## Members

**Jason Baker** (Interim Chair)

**Phil Lynch** - Kent Tennis Office Manager

John Darby - Wimbledon tickets, Life Vice-President

**Vacancy** – Legal Representative

**Nigel Jordan** - Board Member, Treasurer, CIO Implementation

**Malcolm Smith** - Chair of the Board

Note: Under current structure, Board and Council members are shaded in **blue**. Council members in **green**. Staff members in **yellow**.



# COMMUNICATIONS COMMITTEE

- Responsible for ensuring Kent Tennis communicates appropriate information to key stakeholders, using various mediums including social media, press, website and newsletters.

## Members

Clare Lilley (Chair) – Board Member responsible for Comms

Phil Lynch - Kent Tennis Office Manager, Website

Janice White - Club and Coach Engagement Coordinator

Siobhan Butler – Competitions & Performance Coordinator

Vacancy - Social Media

Vanessa Webb – Press

Anna Wilson - Board Member for Padel and Kent Plan, Supporter's Club Comms

Steve D'Almeida – Proof reader

Carol Harrison – Social media adviser & proof reader

Sarah Langford – Communications adviser

Note: Under current structure, Board and Council members are shaded in blue. Council members in green. Staff members in yellow.



# FINANCE COMMITTEE

- Responsible for ensuring the finances of Kent Tennis are managed effectively, including appropriate processes and controls in place and agreement of any County loans. Will provide input to the risk register (particularly an impact aspect) which will ultimately be owned by the Board.

## Members

Nigel Jordan (Chair) – Treasurer

Malcolm Smith - Sponsorship

Janice White - Kent Office Team Member

Tony Fisher - Finance adviser, Supporter's Club

Vacancy - Fund raising other than sponsorship

Note: Under current structure, Board and Council members are shaded in blue. Council members in green. Staff members in yellow.