



**KENT**  
TENNIS

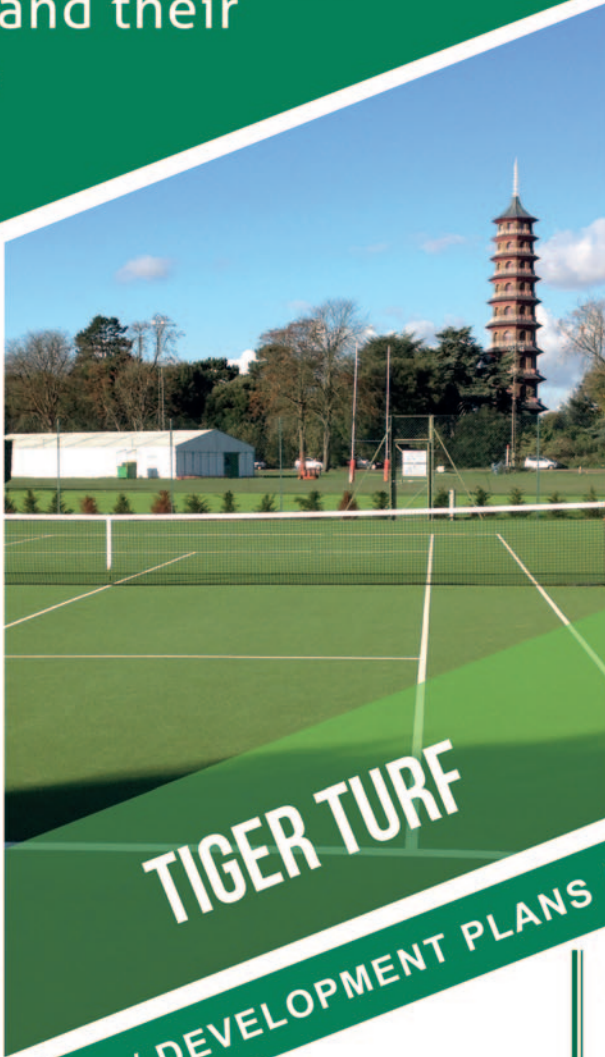


# ANNUAL REVIEW 2022

# AT THE SURFACE OF SPORT

Trevor May - designing, building, resurfacing and upgrading tennis courts and their surroundings.

**PORAFLEX**



**TIGER TURF**

**ADVANTAGE REDCOURT**



**FENCING / FLOODLIGHTING / DEVELOPMENT PLANS / INDOOR STRUCTURES**

**poraflex**<sup>®</sup>  
HIGH PERFORMANCE POROUS CUSHIONED ACRYLIC

Acrylic like performance but with porosity and high quality cushioning, so great for the UK climate both outdoors and in seasonal airhalls.

 **TigerTurf**<sup>™</sup>

Advantage Pro is currently the top choice for many clubs selected from the wide range of artificial grass tennis surfaces we supply and install.

**Advantage RedCourt**  
all-weather tennis courts

The ultimate surface for near year round play, giving high performance and easily managed maintenance. It is ideally suited to upgrading existing courts and is widely used for matches, tournaments and coaching. Where green is better suited to the courts location, we have done that too.



Call now: +44 (0)1233 740574 or  
e-mail: [enquire@trevormay.co.uk](mailto:enquire@trevormay.co.uk)  
[www.trevormay.co.uk](http://www.trevormay.co.uk)

**TrevorMay**  
AT THE SURFACE OF SPORT 

# Welcome from the President

John Watton



It is my pleasure to introduce the 2022 Annual Review and confirm we have had a full year of tennis, with the effects of COVID-19 being far less restricting than the two preceding years. 2022 was a fantastic year for Kent Tennis with players of all ages, backgrounds and abilities enjoying their tennis throughout the county (and beyond).

Firstly, our county teams have enjoyed unparalleled success, with nine of our teams being crowned National Champions! The year started with the Winter County Cup in December 2021, and both our Men's and Ladies teams were crowned National Champions, the first time Kent has achieved this rare double. Also, it was the fifth consecutive year that our Ladies have won the event. Well done to captains Andy Burgoyne and Holly Richards and their excellent squads. Then, Kent had 3 junior teams (Boys 18U, Boys 10U and Boys 9U) and 4 seniors' teams (Ladies 55s, Ladies 60s, Ladies 75s and Men's 70s) winning their National Finals.

It was fantastic to see 6 Kent players competing at Wimbledon this year; Emma Raducanu and Nell Miller in the main draws, plus Sofia Johnson, Pat Brady, Hugo Coquelin and Ben Gusic-Wan in the junior events. This is the first time that six Kent players appeared at Wimbledon since 1961, so very well done to all of them.

We were very pleased with Kent's representation at the LTA National Awards, with 2 National Winners; Emma Raducanu (who was also BBC Sports Personality of the Year) was LTA Player of the

Year and Deal Parochial CofE School were LTA School of the Year; our congratulations go to both. More can be found on all the Kent Awards winners elsewhere in this review.

This year has seen us move towards becoming a Charitable Incorporated Association, and as I write this, I understand we have received approval to become a charity, with the benefits both incorporation and charitable status brings us. Kent Tennis is also restructuring how it manages all its duties and has created six new committees, for which we continue to seek willing and able volunteers. Our thanks go to the volunteers who are guiding us through all this change, and especially Nigel Jordan, our Treasurer, who has spent so many hours on this.

The successful Kent Tennis online Coffee Mornings continue to be a hit with many club officials, volunteers and members joining these monthly sessions, to catch up with our Office Staff, members of our Council, to share best practice, and provide advice to their peers. This really has helped inform us on what's important to our clubs and venues, and we hope people will continue to benefit from these going forward.

As my tenure as Kent's President draws to a close, I would like to thank the many tennis players, volunteers and officials across the county who put so much time and effort into running both the county affairs and the clubs, tournaments and leagues. It has been an honour to serve as President and I'm sure I will continue to see many of you on or off the court, and hope my successor enjoys this role as much as I have.

## CONTENTS:

<b>Welcome from the President</b>	<b>3</b>	<b>CLUBS &amp; COMMUNITY</b>	<b>18</b>
<b>Kent Tennis Playing Highlights 2022</b>	<b>4</b>	<b>Club Tennis</b>	<b>18</b>
<b>Thank You</b>	<b>6</b>	<b>Annual Awards</b>	<b>19</b>
<b>OPERATIONS</b>	<b>8</b>	<b>Disability Tennis</b>	<b>19</b>
<b>Kent Tennis Board</b>	<b>8</b>	<b>Kent Tennis Coaches Network</b>	<b>20</b>
<b>Kent Tennis Council</b>	<b>8</b>	<b>Kent Tennis Officials Network</b>	<b>20</b>
<b>Kent Tennis restructure</b>	<b>9</b>	<b>Kent Tennis Supporters Club</b>	<b>20</b>
<b>Officials &amp; Volunteers</b>	<b>10</b>	<b>Safeguarding, Legal &amp; Discipline</b>	<b>21</b>
<b>Communications</b>	<b>12</b>	<b>Wimbledon Tickets</b>	<b>21</b>
<b>COMPETING</b>	<b>13</b>	<b>Subscriptions &amp; Fees</b>	<b>22</b>
<b>County Cup</b>	<b>13</b>	<b>FINANCIAL &amp; COMMERCIAL</b>	<b>23</b>
<b>County Training</b>	<b>14</b>	<b>Financial Summary</b>	<b>23</b>
<b>County Championships</b>	<b>15</b>	<b>Sponsorship</b>	<b>24</b>
<b>Play Your Way To Wimbledon</b>	<b>16</b>	<b>Charity – Sadie Bristow Foundation</b>	<b>24</b>
<b>National League</b>	<b>16</b>	<b>Account Summary 2022/23</b>	<b>25</b>
<b>Kent Tennis Inter-Club Leagues</b>	<b>16</b>	<b>Obituaries</b>	<b>26</b>
<b>District Leagues &amp; Associations</b>	<b>17</b>	<b>RESULTS</b>	<b>27</b>
<b>Schools Tennis</b>	<b>17</b>		

Front cover picture: Deal Parochial CofE School – LTA National School of the Year

Back cover picture: Kent's Ladies Winter Team celebrating their fifth consecutive Winter County Cup title (top to bottom: Holly Richards (Captain), Tabby Howe, Olivia Parson, Nell Miller, Sofia Johnson, Gabby Chidwick, Alice Gillan, Jacq Darby)

# Kent Tennis Highlights 2022

▶ Kent Ladies won Winter County Cup Group 1 in December 2021; National Champions for the fifth year running

▶ Kent Men won Winter County Cup Group 1 in December 2021

▶ Kent Boys 18U won County Cup Group 1

▶ Kent Boys 10U won National County Cup

▶ Kent Boys 9U won National (South) County Cup

▶ Kent Seniors Ladies 55s, Ladies 60s, Ladies 75s, and Men's 70s all won National County Cup

▶ Emma Raducanu was crowned BBC Sports Personality of the Year for 2021, awarded LTA Player of the Year, reached a WTA world ranking high of 10, made her debut for Great Britain in the Billie Jean King Cup and became the first Kent player to compete in the main draw of all 4 Grand Slams since Annabel Croft in 1985.

▶ Nell Miller reached a WTA world doubles ranking high of 489, played in the main draw of the Ladies Doubles at Wimbledon, reached her first ITF 80k doubles final, won an ITF 15k doubles title, and, with her doubles partner, Jaeda, became the first pair from North Carolina State University to win the NCAA Championships (National State College Championships, USA).

▶ Alice Gillan finished third in the UK Pro League rankings, qualifying for the National Finals (being held after this review is written) and reached a WTA world singles ranking of 728.

▶ Kristina Paskauskas won her first ITF 15k singles tournament, plus her first two ITF 15k doubles tournaments, all in Tunisia as she reached WTA singles ranking of 955 and WTA doubles ranking of 944.

▶ Sofia Johnson played in the Girls Singles at Wimbledon and represented Great Britain Girls 18U in the European Summer Cup.

▶ Jack Pinnington Jones won his first ITF M25 singles tournament at Santa Margherita di Pula, Italy (without dropping a set) and reached an ATP world ranking high of 489.

▶ Anton Matusевич finished second in the UK Pro League rankings, qualifying for the National Finals (being held after this review is written),

had an ATP world singles ranking of 429 and a doubles ranking of 569, and reached the finals of three ITF M25 doubles tournaments (Loughborough, Shrewsbury and Glasgow).

▶ Pat Brady competed in the Australian Open Boys Doubles, Wimbledon Boys Singles and Boys Doubles, and US Open Boys Singles and Doubles (where he reached the second round in both). Pat achieved an ATP men's world singles ranking high of 1040 and 1158 in doubles.

▶ Huqo Coquelin played in the Boys Doubles at Wimbledon and represented Great Britain Boys 18U in the European Summer Cup.

▶ Ben Gusic-Wan won the National 16U Boys Doubles, and was semi-finalist in both Boys 18U doubles and Boys 16U singles. Ben made his debut at age 14 in the Boys Singles at Wimbledon and became the youngest ever player to represent Kent Men in the County Cup.

▶ Eloise Newberry won the National 14U Girls Singles and was runner-up in the National 14U Girls Doubles.

▶ Judy Zhang represented Great Britain Girls 11U and was runner-up in the National 11U Girls Singles.

▶ Milena Nahornaya was runner up in the National 11U Girls Doubles.

▶ Jim May and Niall Sweeney represented Great Britain in the World Masters Cup in Men's 40s and 70s respectively.

▶ 12 National Seniors titles were won by Kent players this year; Zane Cheeseman (5), Steve Weatherall (3), Hazel Lindfield (2), Marcia Ackers (1), Bob Milner (1), Paul Salter (1), Niall Sweeney (1), David Willan (1).

▶ Deal Parochial CoE Primary School won the LTA's National Award for School of the Year.

▶ Sandi Procter was awarded the Spirit of Sport and Recreation Award by HRH The Earl of Wessex at the Sport and Recreation Alliance's 2022 AGM at St James's Palace. Sandi has been elected President of the Lawn Tennis Association (LTA), starting from January 2023.

▶ Nigel Jordan has been appointed by the LTA as its Chair of the Development Tennis Advisory Group starting in January 2023, and will now be on the LTA Board.

**Pictured below is:** Emma Raducanu receiving her MBE from King Charles III At Windsor Castle in November 2022





Pictured above clockwise from top left: **Kent Ladies and Kent Men** at Summer County Cup; **Kent Men's Singles Champion 2022, Joe Young**; **Nell Miller** (right) with her doubles partner (left), **Jaeda Daniel**, after winning the **US National Collegiate Doubles Championship**; **Stefan, Matt, Matt and Mark (Bexley Mencap)** at the **County Championships**; **Kent Ladies Singles Champion 2022, Alessia Popescu**; **Andy Burgoyne**, at the **Annual Awards** with all 3 national titles he captained or won in 2021 (first player from any county to win Men's Summer and Winter and Men's 35s County Cup all in the same year); **Ladies 55s team** (Keri Jakes, Nayla Solh, Gillie Turner, Jo Moore) – national champions 2022; **Zane Cheeseman** (at Wimbledon) - British Closed Seniors 40s Men's Singles Champion; **Pat Brady** competing at the **US Open**; **Eloise Newberry** – National 14U Girls Singles Champion 2022; **Hugo Coquelin** competing at **Wimbledon**; **Kent Boys 18U** - National Champions 2022.

## Thank You!

**Bromley Tennis Centre, Canterbury Indoor Tennis Centre, David Lloyd Dartford, David Lloyd Kings Hill, Sennocke Centre, The Parklangley Club** – for court hire discounts for County matches, practices and training.

**Bromley Tennis Centre** – for hosting the County Championships and rooms for Council and Board meetings.

**HEAD UK, Trevor May Contractors, East West Connect, Clark Inns Limited, jdm Estate Agents and all our partners and donors** – for their continuing support and sponsorship of Kent Tennis.

**Craig Allen, Jason Baker, Siobhan Butler, Andy Burgoyne, Keith Clark, Denis Costelloe, Steve D’Almeida, Jacq Darby, Tom Defrates, Mary Evans, Alastair Filmer, Susan Finch, Anne Gibbs, Tony Fisher, Luke House, Nigel Jordan, Lisa King, Rosemary Lee, Hazel Lindfield, Phil Lynch, Sandi Procter, John Ratcliffe, Graham Silvester, Malcolm Smith, Geoffrey Stephenson, Graham Sutherland, John Watton, Vanessa Webb, Janice White, Keeley Wicks and Stephen Woodley** - for their contributions in compiling, writing, editing and proof-reading this Annual Review.

## Special Thank You to...

**Harri Izzard** who, regrettably (for us), successfully applied for role of LTA Competition Development Partner for London and the South East, bade us farewell in April. Harri, in one guise or another, worked for Kent Tennis for 15 years, supporting Kent whilst at the LTA, and in the last seven years directly employed by Kent Tennis in our office team. In the latter role, Harri was responsible for setting up and helping evolve the successful county training programme that we now have, as well as leading the running of Kent’s competitions.

We are very grateful for all of Harri’s hard work and support through the years, and wish her all the very best in her new role.



## Special Thank You to... continued

**The following Councillors have all announced they will be standing down from Council**

**Jim Barton** who stepped down in April, having joined Council as representative for Medway LTA, and was, for two years, our Safeguarding Officer. We wish Jim well continuing with his successful coaching programme at Frindsbury.

**Jonathon Dawes**, a former LTA Young Volunteer of the Year joined our Council last year as our youngest councillor (aged 18) and his infectious enthusiasm was soon clear for all to see. He set up the Kent Tennis Youth Engagement Group to help encourage young volunteers to step forward and develop into the future organisers, officials and volunteers of Kent Tennis. Jonathon has an independent councillor role at the LTA and so could not continue on the Kent Tennis Council, but with him coaching at Bromley Tennis Centre and brimming with bright ideas, we hope we will see more of Jonathon in the future.

**Susan Finch** was on Council for 7 years and worked so well with Harri Izzard when setting up the county training programme and more recently was the councillor responsible for County Junior Teams. Susan was previously part of the office team supporting Kent Tennis administratively. Susan can still be found regularly organising matters over at The Parklangle Club.

**Rosemary Lee** is stepping down from Council after 22 years. Rosemary has predominately been the Kent Tennis Supporters Club Membership Secretary in this time, providing the members support on all matters from general Kent matters to Wimbledon tickets, and more. Rosemary also provided support welcoming people to both our County Championships and our Annual General Meeting for many years. Every organisation needs a Rosemary who will take on those extra roles to assist in keeping things running and we are so grateful to Rosemary for her many years of support on the Kent County LTA Council.

**Adrian Packer** joined Council at last year's Annual General Meeting and very quickly made an effective contribution, joining our Board, setting up our Workforce Committee, and helping look into our Inclusion & Diversity policy. However, as an elected Independent LTA Councillor at the LTA, we appreciate that Adrian could not continue with Kent as well as remaining independent so, we reluctantly accepted his resignation ahead of the AGM. We are sure we still see Adrian, with his LTA involvement and also in his role as a Non-Executive Director for UKActive.

**Graham Sutherland** was on Council for 4 years, as the Ashford & District League representative, and continues to undertake great work for his club Wye, as Chairman and inspiring its growth (with Padel courts recently added).

**Sandi Procter** has done so much for Kent Tennis, and British tennis, it is difficult to know where to begin, but after 23 years on Council (and working for Kent as the LTA Tennis Development Officer), Sandi is stepping down from Board and Council to focus on her new role in 2023 as President of the LTA for the next 3 years. Sandi first came onto Kent's Council at the AGM in January 2000 and has been a consistent and effervescent presence ever since. Sandi's passion for setting children on the right path for tennis, resulted in her creating the Red, Orange and Green ball programme that has now been adopted by 150 countries across the world. From there she came to the notice of Kent's Council, always willing to step in and provide support and encouragement to volunteers and office staff alike, where needed. So, it was no surprise when she stepped onto the Board of Management for Kent Tennis in 2007 where she has, of course, excelled. Sandi has always looked to ways of improving everything we do in tennis, and Kent Tennis has benefitted greatly these past 23 years. Prior to her retirement, Sandi was the General Manager of Bromley Tennis Centre.

Sandi first became Kent's LTA Councillor in 2011, before being elected to the LTA Board in 2017 and Deputy President in 2020. Although we expect we shall see less of Sandi with her role as LTA President taking her visiting other counties (and countries) more often, especially as she will be representing the LTA at ITF and Tennis Europe events, we know Sandi's love for Kent Tennis means we will be in her thoughts and never too far away. We also hope that Sandi may be back with us once she has completed her term of office at the LTA. In the meantime, we are incredibly grateful for all the hard work, support and guidance Sandi has afforded us and thank her very much.



**All the many volunteers, coaches, team captains, competition organisers, players, referees, umpires, court supervisors, staff and club members across the county** for all their hard work and amazing contributions in 2022, across clubs, parks and venues in promoting tennis openly to all ages, backgrounds and abilities. Well done everyone!

# OPERATIONS

## Kent Tennis Board

### Malcolm Smith, Chairman, Board of Management



It has been absolutely wonderful to get back to some level of normality this year and enjoy a full year of events, competitions and playing. As a Board, we started to meet in person again back in February, which everyone was glad to start doing again after so many 'remote' on-screen meetings. We set ourselves a full plan for this year and perhaps we were slightly over-ambitious in its compilation, but it did once again set us a clear road map for the year just gone.

One area of particular focus has been around changing our constitution and the way we organise ourselves. The application has now been made to try and establish ourselves as a charitable organisation and we have initiated the establishment of a number of new committees to ensure we maintain the involvement and input of our Council and other leading volunteers.

In parallel, the LTA has been running its own County governance review (under the direction of our very own Nigel Jordan) and this has required us to align ourselves to their new county funding model and also, very importantly, to comply with certain requirements for our Board members term of office. As a result, we have started to plan for the retirement of some of our longer serving members of the Board (myself included) and look to bring on new people onto the Board. This remains a key focus for us over the next year.

On a lighter note, our engagement with clubs and venues has continued apace with the ever popular 'coffee morning' meetings providing much needed support and shared guidance as clubs navigate their way out of the pandemic situation. Clubs are increasingly looking to add padel facilities and it continues to grow in popularity, and we have been pleased to offer advice for those who are pushing ahead with this.

Sadly, I am not yet able to report a satisfactory outcome for the Bromley Tennis Centre, but we remain focused on this and will be doing all we can to achieve a stable and sustainable outcome to retain it as one of the leading tennis hubs in the county.

As a county, we are now increasingly dependent on our paid staff, and I would like to thank all of them for their hard work and commitment this year. We sadly lost Harri to the LTA part way through the year but Siobhan has ably stepped in. Both Phil and Janice plugged the gaps fantastically in between, in addition to their other duties. We are also extremely fortunate to have Craig Allen leading our performance initiatives and he continues to make a superb contribution on this front.

And finally, it is with a slight tinge of personal sadness that I recognise that we will be losing the full attention of Sandi Procter as she moves, in January, to take up the role of LTA President. I know she will stay closely in touch with all that we do but her presence will sadly be diminished and I for one will miss her contribution and insights. We wish her every success in her role.

## Kent Tennis Council

### Jason Baker, Honorary Secretary, Kent Tennis



As 2021 ended, we hosted our AGM over zoom for the second year running. The numbers on camera were similar to the previous year with 77 people dialling in to represent 34 of our venues. It was great to see so many people from different clubs taking an interest in Kent Tennis, and we thank all of you for your contribution to tennis across the county. In addition to approving the usual elements, including the accounts, re-appointment of

auditors and Council members, the meeting was also asked to agree the proposed Constitution for when the organisation moves to a Charitable Incorporated Organisation (CIO).

Kent Tennis is run by a Council elected by its member organisations, and on a day-to-day basis by a Board of representatives from members of the Council. In 2021, the Council met three times, once on zoom and twice with some people at Bromley Tennis Centre and others on camera. The Council ratifies the key decisions taken by the Board.

The Council meetings concentrated on the effective implementation of the Kent Plan, which was very much focused on building on the increase in the number of people playing tennis post covid, and ensuring our governance was in line with the LTA new requirements

and suitable for the transition to a CIO. Over the year we have discussed, learned and made decisions on a number of areas covering: the LTA Youth Engagement programme, the future governance of Bromley Tennis Centre, the future structure of Kent Tennis after becoming a CIO, the appointment of a new LTA Councillor for Kent, succession plans for our existing volunteers and the recruitment of new recruits from varied backgrounds to increase our diversity. At each meeting, Nigel Jordan, our LTA Councillor gave a report on the delivery of the LTA objectives and focus areas.

It has been a tough year for many, and our Councillors remained resilient throughout. As Kent volunteers, Councillors also had to cope with the realisation that the organisation was about to undergo significant change and roles may be different in the future, which can often make many people uncomfortable. I would like to thank Councillors for adapting and responding to the situation and for all their hard work and time given in the pursuit of making Kent Tennis even better. It is pleasing to see that we have managed to recruit a number of new volunteers for 2023.



# Kent Tennis restructure 2022/2023

Jason Baker, Honorary Secretary, Kent Tennis

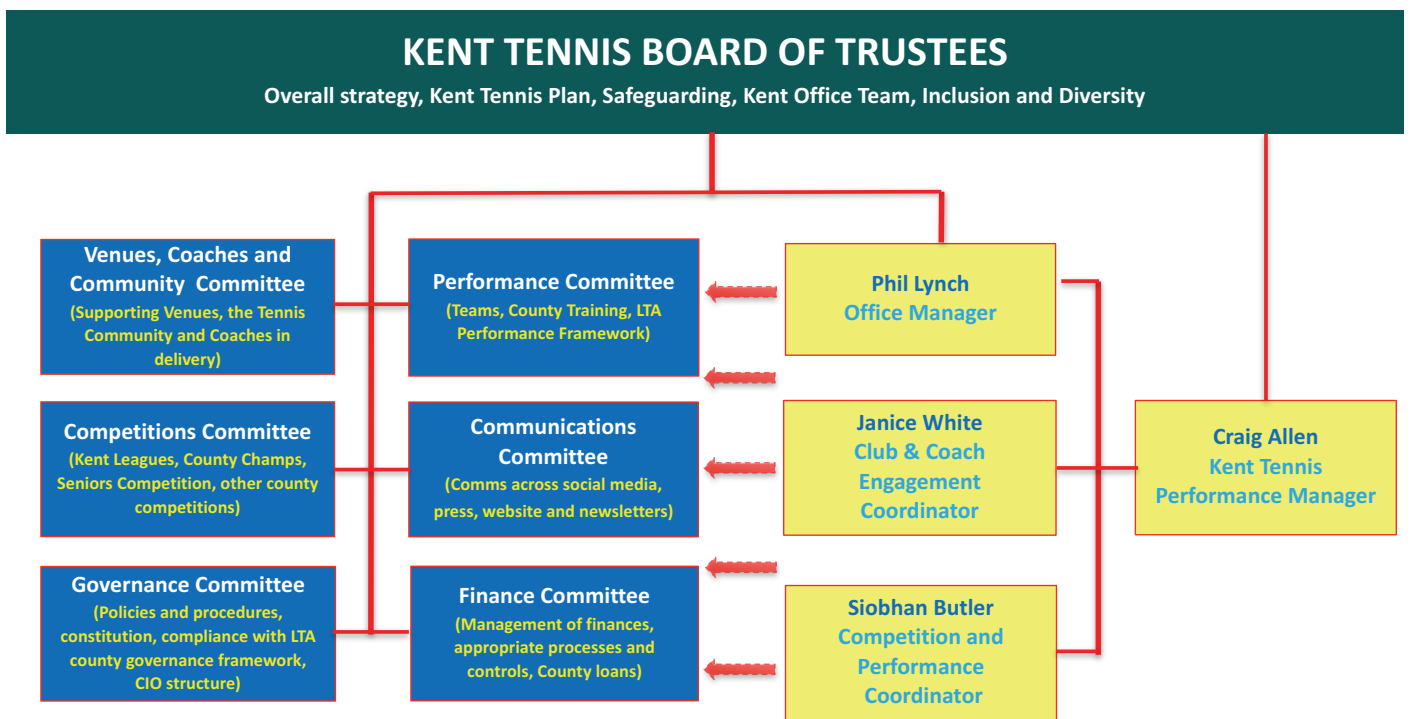
Since its foundation in 1890, Kent County Lawn Tennis Association has been a loose association – a group of members who came together with the common purpose of enjoying tennis. In a strictly legal sense, the “assets” we own – such as bank accounts - are held “in trust” by 3 trustees on behalf of all the members. As time has passed, the world has become more litigious and the amount of money we handle has increased significantly. As a result, the level of risk carried by the trustees has also increased. This loose structure is not suitable for the 21st century.

Following consultation with members at the AGMs in 2020 and 2021, Kent Tennis decided to become a charity by registering in a new legal

form. We have just successfully registered the charity Kent Tennis Charitable Incorporated Organisation and will now plan how we move our activity into that new structure during 2023.

Once we begin to operate as a charity, we will be governed by a Board of Trustees comprising a maximum of 10 people. They will largely come from our existing Board of Management, and will include the Chair, Treasurer, Secretary and LTA Councillor. Beneath that, the day-to-day management of activity will be conducted by a series of committees. Each of these committees will include at least one trustee, but the committee does not have to be chaired by that person. The areas covered by the committees are as shown by the diagram below.

## Kent Tennis Committee Structure



As it will take several months to open bank accounts, TUPE the staff across and deal with all the formal legal transfers, we remain in a state of transition. We are testing and trialling different ways of working, involving a significantly greater number of people from every aspect

of tennis within Kent. In bringing in new volunteers we are looking to gain insight from people from a wider background to provide as much diversity in our volunteers as we can.

# KENT COUNTY LTA COUNCIL 2022

## Honorary Positions

President:

**John Watton**

Deputy President:

**Mary Evans**

Honorary Life President:

**Austin Smith**

Honorary Life Vice-Presidents:

**Roger Bottomley**

**Denis Costelloe**

**Angela Darby**

**John Darby**

**Stuart Smith**

**Stephen Woodley**

## Board of Management

### Board Member

**Malcolm Smith**

**Jason Baker**

**Nigel Jordan**

**Luke House**

**Adrian Packer**

**Sandi Procter**

**John Ratcliffe**

**Graham Silvester**

**Anna Wilson**

### Roles

**Chairman of Board & Performance**

**Hon. Secretary & Governance & Competitions**

**Hon. Treasurer & Financial Affairs**

**Coaches Network**

**Workforce & Inclusion and Diversity**

**Board Adviser**

**Venues, Coaches and Community**

**Communications & Marketing**

**New initiatives (including Padel)**

### Clubs

Tunbridge Wells

Tunbridge Wells

Old Wilsonians

Bromley Tennis Centre (from Oct)

Bromley Tennis Centre (to Oct)

Bromley Tennis Centre

Shooters Hill

Bromley Tennis Centre

Sundridge Park

## Elected Councillors

### Councillor

**Jim Barton**

**Jacqueline Darby**

**Jonathon Dawes**

**Tom Defrates**

**Mary Evans**

**Susan Finch**

**Tony Fisher**

**Lisa King**

**Sarah Langford**

**Rosemary Lee**

**Clare Lilley**

**Graham Sutherland**

**John Watton**

**Vanessa Webb**

**Keeley Wicks**

### Roles

**Medway League**

**Adult County Teams**

**Youth Engagement**

**Disability Tennis**

**Deputy President, Awards, Schools Tennis**

**Junior County Teams**

**Kent Supporters Club – Finance**

**North Kent LTA**

**Projects**

**Kent Supporters Club – Membership/Admin**

**Projects**

**Ashford District League**

**President, Seniors County Teams**

**Press Officer, East Kent LTA**

**Kent Inter-Club Leagues**

### Clubs

Frindsbury (to Apr)

Bromley Wendover/Sundridge Park

Bromley Tennis Centre

Bromley Tennis Centre

Oxford

Parklangley

Knoll

Sundridge Park

Bromley Tennis Centre

Bromley CC

Sundridge Park

Wye

Beckenham/Bearsted

Whitstable

Bexley

**Note: All Board of Management members are also elected Councillors**

Trustees: **Jason Baker, Nigel Jordan, John Ratcliffe**

## Kent Tennis Office Team

**Phil Lynch**

**Janice White**

**Harri Izzard**

**Siobhan Butler**

**Craig Allen**

**Kent Tennis Office Manager**

**Clubs & Coach Engagement Coordinator, and County Safeguarding Officer**

**Performance & Competitions (to April 2022)**

**Competitions & Performance Coordinator and Deputy County**

**Safeguarding Officer (from Aug 2022)**

**County Performance Manager**

## Council Attendees 2022

Councillor's name	No. Meetings invited to	No. Meetings attended	Councillor's name	No. Meetings invited to	No. Meetings attended
Jason Baker	3	2	Adrian Packer	2	2
Jim Barton	2	2	Sandi Procter	3	3
Denis Costelloe	VP	2	John Ratcliffe	3	3
Angela Darby	VP	3	Graham Silvester	3	3
Jacqueline Darby	3	2	Malcolm Smith	3	2
John Darby	VP	3	Stuart Smith	VP	3
Jonathon Dawes	2	2	Graham Sutherland	3	2
Tom Defrates	3	2	John Watton	3	3
Mary Evans	3	3	Vanessa Webb	3	3
Susan Finch	3	2	Keeley Wicks	3	2
Tony Fisher	3	3	Anna Wilson	3	3
Luke House	3	3	Stephen Woodley	VP	1
Nigel Jordan	3	3	Craig Allen	1/KT	1
Lisa King	3	3	Siobhan Butler	1/KT	1
Sarah Langford	3	2	Harri Izzard	2/KT	2
Rosemary Lee	3	3	Phil Lynch	2/KT	2
Clare Lilley	3	3	Janice White	3/KT	3

**NOTES:** VP = Honorary Life Vice-President KT = Kent Tennis Office Team. VPs & KTs are not permitted to vote but are welcome to attend and speak at Council meetings.

## Volunteer & Working Groups

Kent Inter-Club Leagues:	<b>Keeley Wicks (Chair), Siobhan Butler, Harri Izzard, Anne Gibbs, Mark Martin, Rachael Taylor, Vanessa Webb,</b>
Tournament Organisers:	<b>Siobhan Butler (Kent Tennis Office), Keith Clark (Seniors), Mary Evans (Schools), Harri Izzard (Kent Tennis Office)</b>
Men's Captain, Vice-Captain:	<b>Alastair Filmer, Sean Thornley</b>
Ladies Captain, Vice-Captain:	<b>Holly Richards, Jacqueline Darby</b>
Seniors Men's Captains:	<b>Stephen Woodley (Chair), Jim May (35s), John Gotke (45s), Jason Baker (50s), Dino Skeete (55s), Keith Gill (60s), Jasper Cooper (65s), Jonathan Potter (70s), Keith Clark/Gary Sims (75s)</b>
Seniors Ladies Captains:	<b>Hazel Lindfield (Chair), Lindsey Goddard (35s), Kate Hands (40s), Suzy Russell (50s), Nayla Solh (55s), Jane Gentle (60s), Sheila Badger (65s), Myra Hunter (70s), Janet Broster (75s)</b>
Juniors Captains:	<b>Max Robinson (Boys 18U), Tom Jarvis (Boys 14U), Dom Cobby (Boys 12U), Shane Theobald (Boys 11U), Brett Spencer-Stephens (Boys 10U), Tom Samson (Boys 9U), Pippa Lane (Girls 18U), Martin Whitehouse (Girls 14U), Katy Taylor (Girls 12U), Sarah Wray (Girls 11U), Harry Bushnell (Girls 10U), Tom Samson (Girls 9U), Greg McNally (Mixed 8U)</b>
Kent Officials Network:	<b>Jason Baker (Chair), Siobhan Butler, Charlie Falconer, Harri Izzard, Chris Mann</b>
Kent Tennis Supporters Club:	<b>Rosemary Lee, Tony Fisher, Janice White</b>

## LTA Officials

**Stuart Smith**  
**Austin Smith**  
**Sandi Procter**  
**Nigel Jordan**  
**Sarah Langford**

**LTA Past President**  
**LTA Honorary Life Vice-President**  
**LTA Deputy President and elected member of LTA Board**  
**Kent's LTA Council representative**  
**Tennis Industry Association's LTA Council representative**

## Communications

With Kent Tennis in the process of restructuring itself for 2023, the Communications Committee will come to the fore in ensuring Kent Tennis delivers on its plans, both on strategy and in the implementation of the new Charitable Incorporated Organisation. The key strategy for Communications remains, of course, to broaden the visibility of Kent Tennis and to improve engagement with clubs, supporters, sponsors, coaches, players and councillors.

We continued our **Kent Tennis Coffee Mornings** helping us bring more people from more clubs together to share best practice, provide valuable updates and assistance where possible. These are chaired by Phil Lynch, with discussions led by John Ratcliffe and updates from Janice White on a wide range of topics for club representatives, along with Competitions and Performance advice from Siobhan Butler.

The digital **KLTs** continued with Graham Silvester doing an excellent job on the design work on the MailChimp digital emailing service. In addition to Graham, we are very grateful to the following for their writing, editing and proof-reading for our articles this year – Jason Baker, Siobhan Butler, Steve D’Almeida, Jonathon Dawes, Carol Harrison, Harri Izzard, Nigel Jordan, Clare Lilley, Phil Lynch, Sandi Procter, Vanessa Webb, Janice White, Anna Wilson and Stephen Woodley.

## Padel tennis

The rise of Padel tennis in Europe has been monumental (Spain now has over 6 million players) and is now taking the UK by storm. In the three years from the LTA promoting Padel in 2018, the amount of players participating in the UK has grown from roughly 3,000 to 89,000.

Padel is a form of tennis that is easy to play, fun and extremely sociable. It is played in a doubles format on an enclosed court smaller than a tennis court. The rules are very similar to tennis, although you serve underarm and the walls are used as part of the game. It’s a great game for all ages and abilities, ideal as a family game as it’s not power dominant.



Vanessa Webb continues to amass a large circulation with her **Media Coverage across** over 70 local newspapers in Kent and South East London, as well as interviews with television companies and radio stations, updates appearing on the KM Online website and, regular spots on KMFM Radio.

Our **Social Media** presence continues to grow with the Kent Tennis Office team undertaking the posts this year. We are looking for a new willing and able volunteer to deliver this for us. We now have 1,829 followers on Instagram. Anyone interested in helping with our social media should contact our Office Manager on phil.lynych@kenttennis.org.uk

The Office Team are managing the **Website** and continuing to find ways to improve this. We are very grateful to Graham Silvester, who continues to provide assistance to supplement their work.

In 2022, we looked to cover off a wider range of subjects in our communications, as well as the usual county tennis events and required operational updates. It was a start but we believe we can do more and are starting to make plans now. We are grateful to the volunteers across the county who continue to provide us stories and news; thank you to all.

Only two clubs in Kent currently have Padel courts; Sundridge Park and Wye. Success in Padel has been swift in coming to Kent, Sundridge Park Ladies winning the National iPadel League title in the summer, and two of its players, Kate Hands and Kerry White represented England in an international Seniors match v Ireland. Kent’s former tennis No.1, Abigail Tordoff represented GB too this year. However, many more clubs are now making enquiries of Kent Tennis and if you would like any further information on Padel in Kent please contact: Anna Wilson via email [annawilsonhq@gmail.com](mailto:annawilsonhq@gmail.com).

**Pictured below:** Left, Sundridge Park Ladies after winning the National iPadel League (left to right Jacq Darby, Kerry White, Sarah Lochrie and Daria Robertson). Right, Abigail Tordoff in action for Great Britain Ladies.



# COMPETING County Cup

Kent is one of only a handful of counties that enters teams into every age group of the National County Cup from 9U all the way through to 75s. At junior level, the age groups are at 9U, 10U, 11U, 12U, 14U and 18U each for Boys and Girls. There is also a summer Men's and Ladies County Cup, a winter Men's and Ladies County Cup, a Men's and Ladies over 35s County Cup and a Seniors County Cup with age groups for Ladies 40s, Men 45s, and then 50s, 55s, 60s, 65s, 70s, and 75s each for both Ladies and Men. The format of each event varies slightly according to the age groups.

In addition to the County Cup teams there are also usually Inter-County Championships held at a regional level for juniors at 8U and 16U.

Kent Tennis organises all the junior teams. This includes supporting team selection, confirming coaches, arranging transport, accommodation and finances for all stages of the events that our teams qualify for, as well as finding/agreeing venues for fixtures within the county. The events are hugely popular with the juniors selected, with many of them choosing it as their top tennis event of the year. The enjoyment they get from these events translates beyond junior tennis, with many players having represented Kent at Junior, Adult and Seniors level through the years. We are incredibly grateful to all the hard work and support provided by Craig Allen (County Performance Manager), Siobhan Butler (Competition & Performance Coordinator), as well as Susan Finch for all her help and assistance throughout the year, and, of course, Harri Izzard, who was our Performance & Competitions Manager until April 2022.

With the restrictions lifted, all events took place in Winter 2021 and in 2022. And what a year it was, with 9 teams becoming National Champions!

Our Men and Ladies kicked off by both being the National Winter County Cup Champions in December 2021; the Ladies for a record 5th year running (see back cover of this review). Our Junior Boys 18U, Boys 10U and Boys 9U were all national champions too in the summer, followed by the Seniors winning in October with Ladies 55s, 60s, 75s and Men's 70s all triumphant. If that wasn't enough, both Men's Summer and Men's 35s teams were national Runners-up losing out by narrowest of margins on the final day of their events. A further 6 junior teams finished as runners-up in their regional qualifying groups this year (Boys 14U, Girls 14U, Boys 11U, Girls 11U, Girls 10U, Girls 9U) – and five of those lost out to the eventual national champions. Our 8U Boys and Girls teams also finished as runners-up in their regional inter-county cup. This has been the most successful year for Kent's teams. Congratulations to players, coaches, captains, parents and supporters for the hard work, enthusiasm and success achieved this year.

Details of results and players can be found in the results section of this Annual Review.

**Pictured below:** The successful Boys 10U and Boys 9U teams. 10U – Darnay, Tony, Eoin, Matyas, Luke with Captain Brett Spencer-Stephens (right) and Vice-Captain, Sam Smith (left) and Boys 9U – Henry, Lewis, Harrison, Matyas, Jake with Captain Tom Samson and Vice-Captain Lucy Morrice-Jones



## County Training

The provision of county training for over 150 players is one of the largest responsibilities for Kent Tennis. Over the 2021-22 season, we scheduled 280 hours of training delivered by 26 coaches, primarily at Bromley Tennis Centre, Parklangley, Sennocke Centre, David Lloyd Dartford and David Lloyd Kings Hill.

Craig in his new role of County Performance Manager, has been managing the County Training Programme, taking responsibility for the philosophy, the content and delivery of the training sessions, whilst managing the coaching team. Craig leads the selection process for County teams and preparation for County Cup competitions.

For 2022 we redesigned the programme under the umbrella of Kent Tennis' Junior County Programmes. These programmes are designed to bring together the very best players from around the county, in a hard working, fun and informative environment. The purpose of the programme is to not only to support the development of each player, but to bring together groups of players as a team in what is primarily an individual sport.

The programme consists of 'County Camps' for children under the age of 8 and our 'County Training' programme running between the ages of 9U-18U. In addition to 7U & 8U monthly county camps, we will also run a specific, girls only camp around Christmas time.

Throughout the duration of the county training programme, whilst there will be singles play, the main focus will be to learn about the British Tennis Doubles System, with priority attention given to the specific areas that the age group captain has highlighted to best prepare the players for the County Cup event. Sessions are often held monthly on a Sunday afternoon/evening.

The introduction of Nike kit in 2020 has been a real success and is available to county programme players. The suppliers are kitlocker.com, and the store can be found on the Kent Tennis website.

**Pictured below:** County Championships 2022 – some of the finalists with their trophies.



## Player Funding

Kent Tennis has reinstated its Player Funding Panel to review the possibility of awarding grants to players with a high level of potential, commitment and success to assist with their training and attending competitions. Funding is sourced from the Murton Pitts fund for smaller awards to players and from certain of our Kent

sponsors and donors. We were pleased to be able to assist a number of players with their development this year and will continue to review the levels of support that we can provide as we move forward.

## County Championships

As usual, the last week of school summer holidays brought the flagship tournament in Kent, the County Championships. Bromley Tennis Centre provided the venue for the week long event, with matches taking place for up to 13 hours each day. Entries were up by over 20% on 2021 with 358 entrants across 27 events ranging from 8U to Open, although still lower than pre-covid numbers.

The week ended with a busy finals day where Sebastian McDonnell-Palomares and Chloe Cleaver triumphed as Boys and Girls Singles County Champions (18U winners – both pictured below) for the first time, beating Angus Howard and Darshani Popat respectively. Chloe completed a double when winning the Girls 18&U Doubles partnering Anais Gauthier. Mention and congratulations must also go to Iris Grosso, who was the only player to win more than one singles event, being victorious in the Girls 10U and 11U Singles beating Olivija Konstantinova in both finals.

The largest entry was in the Men’s Singles with 59 players competing in matches all taking place after 6pm. The event was won by Joe Young who played brilliantly all week, losing only 8 games in his 5 matches. Alessia Popescu was nearly as dominant winning the Ladies Singles without dropping a set.

Congratulations to all the winners and losing finalists. They kept a big crowd entertained all day with some excellent tennis in the finals.

We are already planning changes to encourage qualifying events to go ahead on the weekend before at other venues around the county. Please do let us know if you have any ideas that would persuade you or your children to enter.

2022 saw the first learning disability events held in our County Championships. This will be a regular event and we hope to build on this in future years.

Finally, a big thank you to the Tournament Committee led by Janice White, the tournament team of Referees, Chris Mann and Jason Baker and event director, Graham Silvester, and of course all the helpers, including court supervisors, umpires, Kent Tennis staff and volunteers. A particular mention goes to Chris, who is stepping down as Lead Referee after 12 years, transforming the tournament into one of the most successful county championships in the country, with entries rising to over 400 (the record being 440 in 2017). Our thanks also go to Bromley Tennis Centre for being excellent hosts and partners in the running of the tournament once again.

Roll on August 2023 for another successful and, hopefully, record breaking County Champs, which will also be the centenary for our junior events.

A full list of champions and runners-up can be found on page TBC



## Seniors County Championships

The Seniors County Championships are run both for Men and Ladies, with Keith Clark and Siobhan Butler running these respectively during the winter, with prizes sponsored by Clark Inns Limited. These are for players who are either Kent qualified (birth/residence) or are a member of a Kent registered club. This is an especially useful way of prospective county players being seen by the relevant Seniors Captains ahead of the summer inter-county championships selections.

The Men’s events are run as a postal tournament, from October, for age groups from 45s to 75s, with finals then held in March at

Bromley Tennis Centre. The Ladies events were held as one day doubles event at 40s/60s and 50s/70s respectively, also held at Bromley Tennis Centre.

Entries increased to a healthy 144 entries across 12 events for 2021/22. We are looking at how we can build on the success of these events, and include Seniors events within our County Championships, whilst being mindful that the British Open Grass Court Championships have the same date on the calendar as County Championships. The Competitions Committee will be looking for ideas in 2023.

## Play Your Way To Wimbledon

Play Your Way to Wimbledon is the largest junior tournament in British Tennis, providing 14U players the opportunity to progress from clubs and schools through to competing on the world famous grass courts at the All England Lawn Tennis Club (AELTC), Wimbledon. Players who secure a place in the finals at the AELTC gain a real insight into what it might be like to take part in the Wimbledon Championships themselves. Competitors have access to the player restaurants and locker rooms and play on the practice courts.

We encourage local clubs, parks and schools to stage a tournament for their members or pupils who have an ITF World Tennis Number between 20.0 and 40.9 at the time of the event they're competing in. Winners of these events then progress to the Kent County Finals. County Final winners are then invited to the Play Your Way to

Wimbledon Finals held at the AELTC, Wimbledon, in August. Kent Tennis organises the county finals of this event, and our thanks go to Susan Finch and Jason Baker for refereeing our Girls and Boys finals, and Mary Evans, Kent Tennis Deputy President for presenting the trophies.

Kent's County singles winners, Nate and Anvi, played at the the All England Club in August in the Boys and Girls events respectively with Anvi winning her way to the semi-finals. There was also a Competition held for the LTA's Regional doubles players which included several Kent players. Notable results were from Chloe and Isabel, David and Matthew who became regional champions, with David and Matthew finishing as semi-finalists in the National County event.

## National League

The National League is a singles and doubles based team competition, managed nationally by the LTA, organised by each county for its registered venues, and held in both summer and winter. In the summer, it covers all age groups from 8U to adults, and in the winter, it covers juniors 8U to 18U.

The adult leagues, run only in the summer, comprise teams of 4 players each playing a singles match before each plays a doubles match. Clubs enter their teams in their county divisions, and can progress to qualify for promotion into Regional and National divisions for the following year. Matches are played April to June, with regional play-offs and National finals played in July.

The junior leagues in the summer are split into Premier League and County League. The Premier league is a 4 player format, playing singles and doubles like the adults. Clubs having higher ranked players can enter directly into the Premier League which allows stronger players and teams to play in a more appropriate standard league. Teams are accepted to the Premier 12U-18U events based on the ratings of nominated players at entry stage. There are 3 age

groups: 12U, 14U and 18U, and matches are played April to June, with National Finals in July.

The junior County National Leagues run by Kent Tennis accept entries into draws for both the 4 player format and also a 2 player format (where players play one singles each and then combine to play doubles). There are eight age groups: 8U, 9U, 10U, 11U, 12U, 14U, 16U and 18U. Whereas there are separate boys and girls draws for 11U to 18U, there are only Mixed teams for 8U to 10U. These matches are played April to July, but no play-offs after.

The format for the National Winter Junior League is two-player teams in round-robin boxes which then lead to a knock-out for the county final in March.

The Summer National League was successfully completed, with 247 teams participating, and following two years of COVID-19, the Winter league was held with 166 teams taking part.

## Kent Tennis HEAD Inter-Club Leagues

The Kent County Lawn Tennis Association Doubles Leagues are one of the oldest in the world, having started in 1890. The Summer Season starts in April, runs through to August with Divisional play-off finals in September. The Winter Season starts end of September and runs through to March.

Ladies Doubles, Men's Doubles and Mixed Doubles are played in both summer and winter. The summer leagues also have Midweek Ladies Doubles, Midweek Seniors 45s Men's Doubles and Midweek Mixed (45s Men/40s Ladies) Doubles. The winter has Seniors 40s Ladies Doubles, Seniors 45s Men's Doubles, Midweek Seniors Ladies 60s Doubles, Midweek Seniors Men's 60s Doubles and Midweek Seniors Men's 70s Doubles leagues. Leagues are run with teams of two pairs in both summer and winter.

To keep all the above running like clockwork throughout the year, ensuring results are entered correctly, unknown players' names are entered, and queries resolved, and keeping League Planner Tournament Software up to date, our thanks go to our diligent

competition organisers (Anne Gibbs, Mark Martin, Rachael Taylor and Vanessa Webb) and the Inter Club Leagues Coordinator, Keeley Wicks. Our thanks also go to Harri Izzard and Siobhan Butler in the Kent Tennis Office Team for their invaluable help, especially in setting everything up on League Planner for the online results recording and assisting Keeley and the league organisers answer numerous queries.

The winter season 2021/22 completed on schedule in March, having not completed the year before (due to COVID-19), with 414 teams entered. There were 366 teams entered into the summer 2022 season.

The leagues are sponsored by HEAD UK, official ball supplier to Kent Tennis.

The Results Section of this Annual Review has the full list of winners for the completed Kent Leagues.



## District Leagues & Association

There are 5 District Tennis Leagues being run within Kent that are affiliated to Kent Tennis. They have their own constitutions and committees but can turn to the Kent competitions committee for advice and assistance where relevant. All these leagues were impacted by the COVID-19 pandemic but have now returned to run a full programme for winter 2021/22 and summer 2022.

The District Leagues (and number of affiliated competing clubs) are:

- › Ashford & District Lawn Tennis League - 14 clubs
- › East Kent Lawn Tennis Association - 10 clubs
- › Maidstone & District Lawn Tennis League - 15 clubs
- › Medway Lawn Tennis Association - 4 clubs
- › North Kent Lawn Tennis Association - 32 clubs

## Schools Tennis

Kent Tennis runs competitions for both primary and secondary schools and supports nationwide LTA Youth schools' competitions within the county. In 2022 we were able to run our Kent Schools Programme along with the LTA Youth Schools for Years 7&8, 9&10.

At primary school level, we ran the Kent Tennis Primary Schools Competition, a doubles event at red, orange, green ball levels. We ran 2 qualifying events spread across the county to allow for local competition, with the top 16 teams invited to the finals at Bromley Tennis Centre in June. 89 teams participated in the Bromley qualifier, from 16 schools and 68 teams from 8 schools took part in the Canterbury qualifying event.

At secondary school level, we ran the Kent Tennis Secondary Schools Competition, a doubles event for both boys and girls in Years 7&8, 9&10 and 11-13. This event is a 1 day doubles competition with 120 teams from 21 schools taking part.

We also provide a secondary school's league competition that runs under the umbrella of LTA Youth Schools. This event covers both boys and girls in Years 7&8, and Years 9&10. 114 teams from 33 schools participated. There are three divisions of competition to accommodate for all levels of player, as follows:

› Division 1 is for schools who can field a team of higher ranked performance players. Schools compete in Round Robin boxes leading to elimination draws which in turn decides the Kent Division 1 winner that will then go on to compete at a regional and national level.

› Division 2 is for schools who tend to have more club level players. Schools compete in local Round Robin boxes and the winners of each area will come together to compete in a final at the Kent Schools Games. These finals take place in conjunction with other sports, which creates a real buzz for our county finals. The winner at these finals go on to compete at a regional level.

› Division 3 will be run in 2023 to encourage the less experienced and beginner players to enjoy the sport of tennis at a very local festival level. Schools from across the county volunteer to run an afternoon event, after school, for a cluster of schools to introduce them to the game.

Our thanks to go the large team of volunteers who regularly support the running of Schools Tennis; Kent Tennis main schools volunteer, Mary Evans, (Deputy President, Kent Tennis, who kindly presents the prizes), Siobhan Butler (Kent Tennis Competitions & Performance Coordinator), all the teachers, and other volunteers and staff at our partner organisations. We look forward to seeing you all at these events next year!

**Pictured below:** Kent Tennis Primary Schools Doubles Champions, Walthamstow Hall Schools, with Kent's Deputy president, Mary Evans and competitors from the LTA Youth Kent Year 7&8 Girls Division 2 Finals held at Canterbury.



# CLUBS & COMMUNITY

## Kent Clubs

In 2020/21, Kent’s registered venues numbered as follows:

- › 118 clubs
- › 5 District Associations and Leagues
- › 50 schools involved in LTA Youth Schools Programme

As we moved out of the pandemic, clubs across Kent continued to prosper with membership increases made in the Covid-19 affected years being retained and, in many cases, being added to. This resulted in some clubs closing membership to new players whilst others are getting to the point of having to consider it, due to pressure on courts, especially during peak times. In some of our clubs, junior membership, although increasing from pandemic lows, still remain lower than before Covid-19 struck and problems lie in the two years of Covid-19 when our younger members did not start their tennis development. This is a gap which could go through the age group affected as we move forward. LTA initiatives within Youth Start resulting in 98 courses being run in Kent clubs and the Schools Programme, are trying to address these issues. We are also working closely with the LTA’s South East Team to improve the a shortage in workforce, be it coaches, tennis leaders or volunteers.

Kent Tennis is very grateful, once again, to Janice White for the fantastic support she has continued to provide to clubs. Janice has liaised with clubs, getting them to attend the Kent Tennis online Coffee Mornings, and ensuring clubs all received the useful information discussed at the meetings. She has supported clubs during the registration period with the unexpected issues which turn up when you press the registration button! Kent Tennis Officer Manager, Phil Lynch, chairs the Coffee Mornings, whilst Board member, John Ratcliffe, continues to provide excellent advice and initiate discussions and provides support across the county. In addition to Janice’s own regular updates, the LTA’s South East Regional Team have sent regular contributors to our meetings too, to help keep clubs up to date with LTA initiatives. Our links with the team have grown stronger through the year leading to many new initiatives and facilities being embedded in our Clubs

The Kent Tennis Coffee Mornings now run monthly, and continue to be very well attended. We have also held a number of evening versions, entitled Kent Tennis Club Night In but these were not as well attended. At Coffee Mornings, Club Night In, Coaches webinars, and Club Forums, we were joined by over 240 people from 72 clubs; beating last year’s record attendance. The Kent Tennis Community continues to come closer together as we enter a period of change within the county organization.

A number of clubs took time out to upgrade facilities this year, including the following:

- › University of Kent, Canterbury with four new indoor courts and the appointment of a tennis coordinator helping the development of the workforce within the county
- › Herne Bay establishing their new location
- › Meopham installing clay courts and new floodlights
- › Bexleyheath installing floodlights
- › Wye LTC opening a new padel tennis court

Annually, in September, we host a Kent Tennis Day. To help promote interest in the LTA Annual Tennis Awards, the event is hosted by the venue that last won Club of the Year, which for 2021 was Sellindge. The day celebrates tennis, bringing everyone together and showcases good practice. This year Sellindge put on a true community event with The Kent Family Cup attracting an entry of 32 people and won by Lex aged 8 and his mother Claire representing Sellindge

**Pictured below:** Wye Tennis Club Chairman, Graham Sutherland with club members on their new padel tennis court



## Annual Awards

Kent Tennis has been running Annual Awards since 2004 which feeds into the nationally run LTA Tennis Awards process. The awards are based on the preceding year's activity, with the exception of the Lifetime Achievement Award; this is awarded to someone who has provided exceptional service to tennis in Kent over a period of time, and who has gone above and beyond to help deliver or facilitate tennis in the county. Kent Tennis announced winners in 16 categories for 2021 with winners in 12 categories going forward to the next stage of the LTA regional awards. The next stage was the National Finals which were held virtually online on 19 May 2022. Kent received 149 nominations across the categories which makes it a record year.

The Awards Committee shortlisted the nominations down to 3 for most categories and the names were announced at the 2021 AGM. All short listers were invited to the Annual Awards Dinner, which was held on 5 March 2022 at the Tudor Park Marriott Hotel in Bearsted and was attended by 190 people. The winners were announced by different presenters for each category, 'Oscars' style. Sponsors, Trevor May and Head UK, provided the Club of the Year and School of the Year prizes respectively. Full details of the County winners are in the results section of this review.

## Disability Tennis

Kent Tennis supports the role of a disability co-ordinator, covering the whole county, supporting clubs, coaches, and tournament organisers to make tennis more inclusive. Disability tennis has been growing within the County in 2022 and there have been plenty of new sessions starting around the County.

Link with Special Educational Needs (SEN) schools, partners and charities have improved, especially Mencap. There are padel Mencap sessions running at Sundridge Park and Bexleyheath Tennis Club have forged a great link with Bexley Mencap, providing weekly sessions and a Team Challenge competition. Bexley Mencap received a Regional Highly Commended Disability Award for all their hard work.

Activity around the county has seen Bromley Tennis Centre, Canterbury, Deal, Frindsbury, Gravesham, Meopham, Parklangley, Shooters Hill, South East London Tennis (Ladywell Fields) and Whitstable all delivering regular disability tennis sessions.

One of the aims for 2022 was to increase recreational competition opportunities for players. We started with Learning Disability, with 3 Team Challenge events in Whitstable, Bexley and Bromley with the aim of linking into our first LD event at the County Championships. The team Challenges were very popular with over 40 players attending but unfortunately only 4 attended the County Championships. The 4 that did attend had a great time thanks to

We were delighted that 2 county winners were successful at the South East Regional stage; Deal Parochial Church of England Primary School (School Award), and Graham Sutherland (Lifetime Achievement Award). Also, Bexley Mencap (Disability Programme), Jack Rowland (Shooters Hill, Young Volunteer), Tom Samson (Performance Coach), Den Saunders (Development Coach), Sellindge TC (Club), Swanley Community Tennis (Communities/Parks), and Georgia Lucey (Official) were all Regional Highly Commended Award winners.

Following on from these successes, on 19 May 2022 Deal Parochial Church of England Primary School were crowned National Winner, School of the Year, and Emma Raducanu won LTA Player of the Year. Jack Pinnington Jones was National Runner-up in the Junior Player of the Year.

The process for the 2023 awards is now underway and Kent Tennis again hopes to make an impact at the national awards. Nominations closed on 30 November, with the short list to be announced on Monday 19 December via Zoom. The Awards Dinner will be at The Tudor Marriott Hotel on Saturday 11 February 2023.

John Ratcliffe, Graham Silvester and Phil Lynch and the players went home very happy with their t-shirts and medals. 2023 is about growing the regional Team Challenge programme, so please get in touch if you would like to be involved.

Virtus ran a "Principles of Inclusive Tennis" course in November with disability tennis specialist Mark Bullock. We are looking to run more inclusive tennis courses in 2023 and support coaches with disability CPDs.

The aim remains to engage as many clubs as possible in Kent with disability tennis and help clubs become more inclusive. We want to run more events and encourage more people to take up both wheelchair tennis, LD tennis and VI Tennis. We also have big focus on Mental Health for 2023.

If you would like to know more, please contact [tom.defrates@virtuslm.co.uk](mailto:tom.defrates@virtuslm.co.uk)

**Pictured below:** Left, Lifetime Achievement Award winner, Graham Sutherland with Kent Tennis Chair, Malcolm Smith. Right, Georgia Lucey, Official of the Year with Kent Tennis Deputy President, Mary Evans.



## Kent Tennis Coaches Network

The Kent Tennis Coaches Network (KTCN) was started in 2018 to bring coaches together to share coaching ideas and be part of a coach support network. The KTCN provided a large amount of support for coaches during the pandemic with online webinars through that unique time and to keep developing coaching knowledge.

2022 has seen the introduction of Tennis Leader/Assistant coach CPD sessions to give our potential coaches of the future more support in developing their skills. Sessions were held at Bromley Tennis Centre, Avenue Tennis and Canterbury Tennis Centre so Tennis Leaders had a local option across the county. LTA trained tutor, Tom Carlton, delivered these sessions, which added a lot of value to the Leaders attending around their communication and organization skills.

This year we have also tried to support venues in developing their own coaching workforce. Luke House spoke at a Kent Tennis Coffee morning and will be creating some video resources to help Coaches

and Venues understand the importance of the Tennis Leaders course in engaging young people at your venue that may become future coaches.

This year has also seen the introduction of support from Kent Tennis for coaches through a mentoring scheme. This pilot scheme has seen 3 coaches paired with a mentor for the year to provide them feedback and support in their coaching journey with the ultimate goal of increasing participation in a sustainable way. This will be reviewed at the end of this year and hopefully become a regular part of the plan to support coaches.

Finally, the work to increase recreational competition has continued. Tom Carlton put together a case study of the successful work of the East Kent Tennis Community in increasing the amount of local cooperation to develop recreational competition and delivered this to coaches from around Kent to inspire them to reach out to their local networks of coaches to start more informal competition.

## Kent Tennis Officials Network

The Kent Officials Network is now in its fourth year. The group aims to bring together on and off court officials in the County to share ideas and best practice and support each other in developing and learning, particularly for our less experienced officials. We have held three meetings throughout the year (two by zoom and one face to face at Bromley Tennis Centre), each of which has been attended by between 10 and 15 referees, umpires and court supervisors. We have discussed, and learnt together, on a range of topics including:

- › the recruitment of new officials
  - › World Tennis Number and its impact
  - › how officials can help increase the number of players regularly competing
  - › the continuing development of the competition management system
  - › the use of on-court technology and the impact on officials
- We agreed at the last meeting in 2022, that the format of a mixture

of zoom and face to face meetings had been successful and should continue in 2023. The meetings will take place on the following Mondays in 2023: 6th Feb (by zoom), 15th May 2023 (by zoom) and 2nd October (BTC).

We would like to thank Jason Baker for chairing/leading the Officials Network, Chris Mann for his significant contribution to the group and the sharing of his extensive knowledge and experience, as well as Harri Izzard, Siobhan Butler and Charlie Falconer for their assistance with the administration.

It would be great for more officials to be active in the group so calling all Kent referees, umpires, line umpires and court supervisors who have not attended before, why not give one of the meetings a go in 2023? If you would like more information about the Officials Network or officiating in general, please contact Jason Baker at: [jasonbakerp80jab@btinternet.com](mailto:jasonbakerp80jab@btinternet.com)

## Kent Tennis Supporters Club

The Kent Tennis Supporters Club is open to anyone aged over 11 years - players and their families, coaches, volunteers, and those with a general interest in tennis.

Individual membership costs £17 per year. Members of the club receive regular digital news updates from Kent Tennis, invitations to top quality tennis events, such as the Winter and Summer County Cup, County Championships Finals Day, and the Kent Tennis Open Day. Membership also provides a way of staying connected with Kent Tennis and its activities more generally. The funds generated help support the work Kent Tennis does around the county.

The changes to the allocation of Wimbledon tickets led to a reduction in the number of members this year, and our membership currently stands at 382. Joining the Supporters Club remains an attractive option for dedicated fans who want to watch tennis in the South East, and get alerts to opportunities they might otherwise miss.

Our thanks go to Rosemary Lee and Tony Fisher who manage the Supporters Club on behalf of Kent Tennis. Anyone interested in joining should contact them via email at [supportersclub@kenttennis.org](mailto:supportersclub@kenttennis.org)

# Safeguarding

Tennis should be played in a safe and inclusive environment. The Kent County Lawn Tennis Association shares the same values as its governing body, the Lawn Tennis Association, both on and off court to promote the Fair Play values: enjoy and respect. With those values in mind, Kent Tennis subscribes to the LTA’s Safeguarding, Diversity and Disciplinary policies and regulations.

Club Welfare Officers are supported by the LTA Regional Safeguarding Officer, Stuart Parsons. Stuart undertakes the LTA Safeguarding support visits. To date 71 Clubs in Kent have now had one or more support visits. Every effort should be made to continue to raise awareness of the importance of safeguarding in tennis.

The overall welfare standards remain in good health in Kent with all the work that the clubs undertake, and there were no serious instances of poor safeguarding reported within Kent in 2022. There is a trickle of issues reported but nothing “serious”. Safeguarding

regularly appears on the discussion items for the Kent Tennis virtual coffee mornings, club nights in, and is a standing agenda item on all Kent Tennis Board and Council meetings.

On 1st October the LTA delivered their second annual virtual National Safeguarding Conference, which all Club and County Welfare Officers were invited to attend. The requirement for all Level 2 coaches in clubs to be accredited with the LTA has been introduced this year.

All club personnel need to be responsible for assisting the LTA Safeguarding Team to promote and embed a culture of safeguarding in Kent so that all aspects become ‘business as usual,’ and to ensure we have a safe and inclusive environment for all people to participate in tennis. To this end, all Committee members at clubs and venues should have undertaken the mandatory safeguarding training by the year-end.

## Safeguarding

Kent Tennis is committed to ensuring that its activities involving children and vulnerable adults are safe for all the participants. The Kent County Safeguarding Officer is Janice White.

If you have any concerns about behaviour at a Kent Tennis activity please contact Janice on 07596 365 617 or [safeguarding@kenttennis.org.uk](mailto:safeguarding@kenttennis.org.uk). The County Safeguarding Policy is published on the Kent Tennis website.

# Wimbledon Tickets

Following two years of a Covid-19 affected Wimbledon (including total cancellation in 2020), the Championships returned to some kind of normality in 2022. The allocation of tickets for the fortnight was, however, very different this year, with the LTA taking over full responsibility for their distribution. This included the allocation of tickets to sponsors, volunteers at County and Club level, officials, coaches, members of the Supporters Club and LTA members (including members of Kent clubs). The County were still able to nominate key volunteers for a pair of tickets, although there were very specific criteria as to who was eligible. A total of 38 county volunteers received a pair of tickets.

The other change was that all tickets were electronic and no paper versions were available. Like most new processes, there were a number of teething problems and several people did not receive confirmation of their tickets and a payment request until the

Championships had started. The problems led to a great amount of time spent helping out volunteers pay for and obtain their tickets, which fell on the office team, and our LTA Councillor, Nigel Jordan. The LTA have acknowledged there were significant issues with the distribution of tickets and have carried out a thorough review of the process to avoid similar issues in 2023.

We would like to thank to Phil and Nigel for the amazing amount of work they put in to assist all our volunteers in getting their allocated tickets, often at the last minute. Let’s hope the process is much more efficient in 2023.

**Pictured below:** Left, Sofia Johnson pictured at Wimbledon in the Girls Singles this year. Right, Ben Gusic-Wan in the Boys Singles at Wimbledon this year.



## Subscriptions & Fees

The fees payable on registration for the 2022-23 financial year are shown below

### Kent Fees:

- › Less than 30 members or 1 court only = £50
- › Grass courts in addition to hard courts = £50
- › 2 courts = £100
- › 3-4 courts = £200
- › 5-8 courts = £250
- › 9+ courts = £350
- › Third Party Operators in a Park or Education site = £100 per site.

### LTA Fees:

- › Clubs = £120 per hard/indoor/padel court and £60 per grass court (up to a maximum total of £1,440)
- › Parks & Education Operators with membership/coaching/comps = £60 per hard/padel court
- › Parks with no membership/coaching/comps = free to register
- › Education Establishment, NOT operated by a third party = free to register

## Benefits of Kent Tennis Membership

- a. Interest free loans – up to £10,000 from County funds
- b. Invitation to nominate and participate in the Annual Awards, with recognition for clubs, players, coaches and volunteers
- c. Invitation to Annual Awards Dinner for the presentation of awards
- d. Invitation to the Annual General Meeting
- e. Invites to the online Kent Tennis Coffee Mornings, receiving up to date news plus the sharing of ideas and good practice with your peers and members of the Kent Tennis Council
- f. The KLT online – provided to every club in Kent. Also, every club has an opportunity to submit articles
- g. Paid support staff for volunteers - we have 4 part-time staff who provide their services to everyone within Kent Tennis, one way or another. Despite the many hours put in by volunteers there is still too much to do and the staff are much needed
- h. County Championships t-shirts, programme and trophies. These are paid for by Kent funds to enhance the championships experience
- i. Invites to Special events

**Pictured below:** Left, LTA President, David Rawlinson with local member, Paula, at Swanley Community Tennis this year on his visit to Kent. Right, players in action at Communities & Parks Award winning venue, Swanley Community Tennis



# FINANCIAL & COMMERCIAL

## Financial Summary

### Nigel Jordan, Honorary Treasurer



It has been wonderful to return to a near-normal year of tennis and competition with the easing of pandemic restrictions.

Our finances have remained under tight control throughout the year and, despite some increases in our cost base and additional expenditure needed due to teams reaching national finals, we ended the year very close to balancing the books – just a small deficit of £76.

LTA Registration fees were again collected centrally and passed to us. Income from the county registration fees and the Supporters Club held up well. However, 2022 was the final year in which members of our Supporters Club were eligible for a Patrons Ballot – and this will inevitably lead to a reduction in income for future years.

We received a record level of sponsorship and that enabled us to avoid going into the red this year. Our grateful thanks go to every person and business that supports Kent Tennis. Their support has helped us make financial support available to our most promising older juniors this year after a gap through the pandemic.

Repayments from clubs who have a small loan from Kent Tennis are fully up to date. We made 3 new loans in the year totalling £24,500 and have a further 2 applications under consideration. This scheme exists to help our clubs and venues, and I am pleased that venues continue to seek our help in this way.

Overall, our income and expenditure has returned to – and exceeded – pre-pandemic levels. The continuation of remote working is helping to limit cost increases and I still hope technology can help us to work more smartly, creating further long-term efficiency gains.

It is great that we were once again able to hold the Awards Dinner as well as a very successful Kent Tennis Day at Sellindge. The anticipated resolution of the issues relating to Bromley Tennis Centre has not yet crystallised, but I remain optimistic that will happen soon.

As always, it has been a busy year and I should like to thank Phil, Harri, Janice and Siobhan (Kent Tennis Office Team) for their help and support. They have been fantastic – as ever. I am equally grateful to our bookkeeper – Martin Leonard of Hayfield Bookkeeping - who helps me with the accounting, payroll and occupational pensions. Thank you all.

Looking to the future, we signed a new funding agreement with the LTA to take effect from 1 January 2023. Under that we will receive £90,000 for 2023 but no longer receive the subscriptions clubs pay when they complete the annual LTA regulatory checks largely centred on safeguarding. Funding for the Open Court programme and county training is also included in the new overall grant. But we will be slightly better off under this new arrangement, which compensates for the reduced income from our Supporters Club.

The arrangements for monitoring this new grant involve some strict – but not overly onerous – reporting arrangements and we will need to bring forward the production of our planning and budget forecasts for 2024 so they are available in November 2023 rather than early in 2024 as would have been the case. We will also need to review all our financial arrangements as we plan to transfer into the Charitable Incorporated Organisation that Kent Tennis has recently registered.

The accounts for the year to 30 September 2023 will also look slightly skewed as there will be a 3-month gap in our income until the new grant kicks in from 1 January 2023. With continuing inflationary pressures that impact some of our costs especially heavily, it is important that we continue to focus on generating income from sponsors and donors whilst pressing down on our cost base.

Under the LTA's County Governance Framework, my term of office as Treasurer must end no later than 31 December 2023 – so a priority for the coming months is to find a successor for my role.

## Sponsorship

Kent Tennis continues to look for more sponsors to partner with us and help enable the delivery of all we do across the county, from our junior county training programmes, competitions, and county teams to our County Championships, leagues and administration. Despite the current financial climate, we have been so fortunate to have received assistance this year from a wider range of sponsors and individual donors than ever before. We continue to look at maximising commercial revenue to support ongoing tennis initiatives across the county, and are incredibly grateful to the following sponsors for their support to Kent Tennis, as well as to the wide range of private sponsors and donors who assist us :

- › Trevor May Contractors
- › HEAD UK
- › jdm Estate Agents
- › East West Connect
- › Clark Inns Limited

At our Annual Awards, Trevor May provided prizes to the winners of the Kent Club of the Year and HEAD UK provided prizes for the School of the Year. The Awards Dinner has helped to increase the profile and enhance engagement for our sponsors within the tennis community in Kent, and we hope to catch up with our Sponsors at our next Annual Awards Dinner in February.

We are always happy to talk to potential partners. For more information on supporting or sponsoring Kent Tennis, please contact either our Chair, Malcolm Smith ([malcolm.smith@kenttennis.org.uk](mailto:malcolm.smith@kenttennis.org.uk)) or our Office Manager, Phil Lynch ([phil.lynch@kenttennis.org.uk](mailto:phil.lynch@kenttennis.org.uk)).

## Kent Tennis Charity The Sadie Bristow Foundation



Prior to 2019, Kent Tennis had been active in supporting various charities and societies around the county but had not chosen to get behind a single preferred charity. This changed in 2019, when Kent Tennis agreed to support The Sadie Bristow Foundation.

Sadie Bristow was a talented nine year old tennis player from Chartham in Kent and a star in the Kent 9U team. She suffered a fatal anaphylactic shock in August 2018. Her parents, Stewart and Clare Bristow, plus friends, set up the Foundation in Sadie’s memory to deliver two main things – to introduce tennis and athletics to more children in schools and to increase allergy awareness. Be it tennis, running or skiing, the Foundation organises events for children throughout the year. For tennis, the Foundation continues

to work with local schools in Bridge, Chartham and Sturry, to provide comprehensive tennis and athletics learning modules. Tennis programmes competitions and mini tennis festivals have continued to be run throughout the year.

For more information on how to support the charity and their events, please see their website at The Sadie Bristow Foundation: [Don't Be Afraid to Be Great](http://www.sadiebristowfoundation.org.uk)

**Pictured below:** Left, Stewart Bristow with players at the Tennisathon Sadie’s Day. Right, as well as tennis, Sadie’s other main love was skiing and so the charity organises Ski for Sadie events too.





# Account Summary 2022

## INCOME AND EXPENDITURE ACCOUNT

For the year ended 30 September 2022

	Notes	2022 £	2021 £
<b>INCOME</b>			
Registration Fees	2	93,254	94,449
Other external grants	3	6,500	-
Competitions	4	16,896	13,881
Commercial income	5	87,137	42,285
Miscellaneous income		987	-
Interest (gross)		2,204	2,672
		<u>206,978</u>	<u>153,287</u>
<b>EXPENDITURE</b>			
Affiliation fees		250	250
Player Programmes	6	27,052	9,511
Inter County Competitions	7	55,835	25,183
Competitions	8	15,553	9,505
Business Operations	9	106,618	93,006
KLTA Covid support payments		-	500
Communications and Marketing	10	1,179	1,235
Depreciation		148	197
		<u>206,635</u>	<u>139,387</u>
<b>SURPLUS(DEFICIT) BEFORE TAXATION</b>		<b>343</b>	<b>13,900</b>
<b>LESS: Corporation Tax</b>	11	<u>419</u>	<u>508</u>
<b>(DEFICIT) /SURPLUS FOR THE YEAR</b>		<u>(76)</u>	<u>13,392</u>

## BALANCE SHEET

As of 30 September 2022

	Notes	2022 £	2021 £
<b>FIXED ASSETS</b>			
Long term use of Bromley Tennis Centre	1	170,000	170,000
Computer Equipment	1	444	592
<b>CURRENT ASSETS</b>			
Debtors & Prepayments	12	68,343	62,367
Bank Balances & Cash		<u>425,918</u>	<u>410,889</u>
		<u>494,261</u>	<u>473,256</u>
<b>CREDITORS</b> Amounts Falling Due Within One Year			
Loan		210,000	210,000
Accruals & Deferred Income	13	<u>44,298</u>	<u>23,365</u>
		<u>254,298</u>	<u>233,365</u>
<b>NET CURRENT ASSETS</b>		<b>239,963</b>	<b>239,891</b>
<b>NET ASSETS</b>		<u><b>410,407</b></u>	<u><b>410,483</b></u>
<b>Financed By</b>			
<b>GENERAL RESERVE</b>			
Balance at Beginning of Year		410,483	397,097
Surplus / (Deficit) of Income over Expenditure for the year		(76)	13,392
		<u>410,407</u>	<u>410,483</u>

## Obituaries

### John Povey (1931-2021)

Sadly, just after last year's Annual Review was published, we received the news that Life Vice-President, John Povey, had passed away.

John gave tremendous service to Kent Tennis. He joined Council in 1960, serving on both the junior affairs and competitions committees for 5 years each, before undertaking the role of Honorary Treasurer for 19 years from 1969. John was then elected a Vice-President in 1990 and then a Life Vice-President in 1996.

John's quiet thoughtful approach was well appreciated by his peers on council and he steered the county's finances so well for so long. John was a member of the National Westminster Bank LTC.

Our thoughts are with his family, which includes his grandson, Kent Men's team player, James Davis.

### Peter Stotesbury (1937-2022)

Peter Stotesbury passed away on 19 September at the age of 85, following a lengthy illness.

Peter was probably best known to Kent Tennis Officials as a Kent Tennis Councillor of 21 years from 1989 and sat on the Kent Men's Selection Committee for 34 years from 1975. He was also the Kent Men's Fixtures Secretary for 18 years – aiding three successive (and successful) Kent Men's Captains Charles Bailey, Paul Bourdon, and Richard Whichello. He was a kind, softly spoken gentleman whose enthusiasm for the sport of tennis was enormous, and his wise counsel was often sought out by his peers.

Peter also played to a good standard, representing Kent's Veterans Mens over-45s team in 1984 and 1987. He continued playing right up until last year when illness finally prevented him stepping onto court.

Peter was inextricably linked with The Parklangley Club; 4 generations of his family played there. Starting with his grandmother (who won their Ladies Singles soon after the club started in 1911). Peter was Tennis Captain in the 1960's, first team captain at Squash, whilst also becoming Chairman and Director of Parklangley Freeholds Ltd.

Outside of tennis, Peter was a devout Christian, becoming a lay preacher in the church, a keen Rotarian, an enthusiastic walker, and a lover of wine. Our thoughts and sympathies are with his family and many friends at Parklangley at this challenging time.

### Lionel Hoskins (1932-2022)

We sadly lost Lionel Hoskins, a well known administrator, player and the President of the East Kent LTA in June. Lionel was best known to many as the Honorary Secretary of the East Kent LTA for 26 years from 1993, and as their President up until his death.

In addition to his administrative duties, Lionel was no slouch on the courts. As well as playing at Herne Bay, he represented Kent Seniors men on 59 occasions, for which he received his Seniors County Colours. With doubles partner Paul Drane, Lionel won the Kent Men's over 65s title in 2004 and the over 65s title in 2005, 2006 and 2007. He also won the Men's 70s doubles title again in 2009 with Peter Grimwood.

Lionel was a regular attendee of Kent LTA Annual General Meetings, attending with a ready smile, and a happy chuckle whilst catching up with old friends. We are sure there is a large gap in Herne Bay and East Kent tennis, and we send our condolences to his family and many friends.

### Also this year....

We are also very sad to report the deaths of former Kent Seniors player Norman Witham (Bromley LTC), former Kent Seniors Doubles Champion Angus Wilkie (Mount Pleasant LTC), and former North Kent champion John Farrell (Bexley LT&SRC)

# RESULTS

## National Achievements 2022

### ATP/ WTA World Ranked Players

(top 1000 only) (current ranking as at 14 Nov)

Player	Ranking (this year's high in brackets)
Emma Raducanu	WTA Ladies Singles = 74 (high = 10)
Alice Gillan	WTA Ladies Singles = 728 (high = 723)
Kristina Paskauskas	WTA Ladies Singles = 955 (high = 955)
Nell Miller	WTA Ladies Doubles = 489 (high = 489)
Kristina Paskauskas	WTA Ladies Doubles = 944 (high = 944)
Jack Pinnington Jones	ATP Mens' Singles = 538 (high = 489)
Anton Matusevich	ATP Mens' Singles = 710 (high = 429)
Anton Matusevich	ATP Mens' Doubles = 635 (high = 569)

### ITF World Ranked/Tennis Europe (TE) Ranked Junior Players

(top 300 only) (current ranking as at 14 Nov)

Player	Ranking (this year's high in brackets)
Pat Brady	ITF Boys' 18U Singles = 125 (high = 92)
Hugo Coquelin	ITF Boys' 18U Singles = 241 (high = 201)
Ben Gusic-Wan	ITF Boys' 18U Singles = 307 (high = 259)
Ben Gusic-Wan	TE Boys' 16U Singles = 55 (high = 45)
Nikita Phillips	TE Girls' 14U Singles = 275 (high = 272)

### National Representation 2022

Player	Event / Team
Emma Raducanu	Billie Jean King Cup (formerly Fed Cup) - Great Britain Ladies
Hugo Coquelin	European Junior Summer Cup - Great Britain Boys 18U
Sofia Johnson	European Junior Summer Cup - Great Britain Girls 18U
Ruben Harris	World Team Cup - Great Britain Wheelchair Juniors
Judy Zhang	Junior International - Great Britain Girls 11U
Jim May	World Masters Team Cup - Great Britain Men's 40s
Niall Sweeney	World Masters Team Cup - Great Britain Men's 70s

## National Representation 2022 - continued

Player	Event / Team
Zane Cheeseman	Four Nations Seniors Championships - England Men's 35s
Steve Weatherall	Four Nations Seniors Championships - England Men's 35s
Paul Salter	Four Nations Seniors Championships - England Men's 50s
Nayla Solh	Four Nations Seniors Championships - England Ladies 55s
Colin Coombes	Four Nations Seniors Championships - England Men's 55s
Hazel Lindfield	Four Nations Seniors Championships - England Ladies 60s
Jasper Cooper	Four Nations Seniors Championships - England Men's 65s
Abigail Tordoff	Padel World Championships - Great Britain Ladies
Kate Hands	Padel Seniors International match - Great Britain Padel Ladies 45s
Kerry White	Padel Seniors International match - Great Britain Padel Ladies 40s

## Open Players

Player	Event & result
Emma Raducanu	Australian Open Ladies Singles - second round
Emma Raducanu	French Open Ladies Singles - second round
Emma Raducanu	Wimbledon Ladies Singles - second round
Neil Miller	Wimbledon Ladies Doubles - first round
Emma Raducanu	US Open Ladies Singles - first round

## Junior Players

Event	British Junior National Champions
Boys 16U Doubles	Ben Gusic-Wan
Girls 14U Singles	Eloise Newberry
Event	Grand Slam entrants & results
Australian Open Boys Doubles	Pat Brady - first round
Wimbledon Boys Singles	Pat Brady - first round
Wimbledon Boys Singles	Ben Gusic-Wan - first round
Wimbledon Girls Singles	Sofia Johnson - first round
Wimbledon Boys Doubles	Pat Brady - first round
Wimbledon Boys Doubles	Hugo Coquelin - first round
Wimbledon Girls Doubles	Sofia Johnson - first round
US Open Boys Singles	Pat Brady - second round
US Open Boys Doubles	Pat Brady - second round

## Seniors Players

Event	British Closed Seniors Grass Court Championships - Champions
Mens Closed Grass 35s Doubles	Zane Cheeseman & Steve Weatherall
Mens Closed Grass 40s Singles	Zane Cheeseman
Mens Closed Grass 50s Doubles	Paul Salter
Ladies Closed Grass 60s Doubles	Hazel Lindfield
Event	British Open Seniors Grass Court Championships - Champions
Mens Open Grass 30s Doubles	Zane Cheeseman & Steve Weatherall
Mens Open Grass 40s Singles	Zane Cheeseman
Mens Open Grass 70s Doubles	David Willan
Event	British Open Seniors Clay Court Championships - Champions
Mens Clay Court 35s Doubles	Zane Cheeseman & Steve Weatherall
Ladies Clay Court 60s Doubles	Hazel Lindfield
Mens Clay Court 70s Singles	Niall Sweeney
Ladies Clay Court 80s Doubles	Marcia Ackers
Mens Clay Court 85s Singles	Bob Milner

## Play Your Way To Wimbledon (formerly Road To Wimbledon)

Event	County Finals Results
Boys 14U Singles	Nate De Mariveles beat Xavier Morrison-Osei
Girls 14U Singles	Anvi Karode beat Jessica Lazarean
Event	South East Regional Doubles Finals (Kent players only)
Boys 18U Doubles	David Aboagy & Matthew Wilkes - Champions
Boys 18U Doubles	Bernie Holt & Ben Nelson - Runners-up
Girls 18U Doubles	Chloe Cleaver & Isabel Rayment - Champions
Girls 18U Doubles	Riya Narwan & Ellie Pearman - Semi-finalists (won third place play off)
Event	National County Winners results @Wimbledon
Boys 14U Singles	Nate De Mariveles - 4th in group
Girls 14U Singles	Anvi Karode - 1st in group & then semi-finalist
Boys 18U Doubles	David Aboagy & Matthew Wilkes - 1st in group & then semi-finalists
Boys 18U Doubles	Bernie Holt & Ben Nelson - 3rd in group
Girls 18U Doubles	Riya Narwan & Ellie Pearman - 3rd in group

## Schools Games National Finals

Player	Event & Results
Ruben Harris	Boys Wheelchair 18U Singles - Gold medal
Ruben Harris	Boys Wheelchair 18U Doubles - Gold Medal
Ruben Harris	Mixed Wheelchair 18 Doubles - Gold Medal
Ellen Tribley	Girls Wheelchair 18U Doubles - Bronze Medal

## Kent County Championships - Winter

This 8U event was not held in 2022; this is scheduled for March 2023

## Kent Seniors Championships - Winter

Events	Champions	Runners Up
45s Mens Singles	Dave Butt	Chris Smith
45s Mens Doubles	Nick Lambrou & Gary Le Pla	Gareth Jones & Dave Smyth
55s Mens Singles	John Watton	Colin Coombes
55s Mens Doubles	Colin Coombes & Phil Lynch	Stefano Santini & Phil Stocker
60s Mens Singles	John Watton	Paul White
60s Mens Doubles	Not played this year	
65s Mens Singles	Not played this year	
65s Mens Doubles	Not played this year	
70s Mens Singles	Not played this year	
70s Mens Doubles	Gordon Hayward & Peter Pharo	Jonathan Potter & Brian Robinson
75s Mens Singles	Keith Clark	Stuart Smith
75s Mens Doubles	Keith Clark & Ray Murray	Charlie Coish & Phil Pretty
40s Ladies Doubles	Ashling Carroll & Katya Sheath	Carolyn Tambini & Sandra Webster
50s Ladies Doubles	Hazel Lindfield & Patricia Pinington	Fiona Armstrong & Sue Depledge
60s Ladies Doubles	Hazel Lindfield & Linda McSorley	Anne Gibbs & Sarah Van-Doren
70s Ladies Doubles	Myra Hunter & Kay Mileham	Janet Broster & Sue Colvin

## Kent County Championships - Summer

Events	Champions	Runners Up
Mens Singles	Joe Young	Matthew Pickering
Ladies Singles	Alessia Popescu	Chloe Cleaver
Mens Doubles	Sebastian Kay & Michael Suleau	Ethan Grant & Joe Young
Ladies Doubles	Rebecca Fisher & Daniella Scotland	Amie Tonkiss & Charlotte Tonkiss
Mixed Doubles	Alexis Chastang & Alessia Popescu	Jake Wilson & Eloise Newberry
Boys 18U Singles	Sebastian McDonnell-Palomares	Angus Howard
Girls 18U Singles	Chloe Cleaver	Darshani Popat
Boys 18U Doubles	Alexis Chastang & Ewan Grieve	Sebastian McDonnell-Palomares & Timothy Viding
Girls 18U Doubles	Chloe Cleaver & Anais Gauthier	Ruby Marriage & Charlotte Spratling
Mixed 18U Doubles	No competition this year	
Boys 16U Singles	Erik Ndreu	Monty Depreli
Girls 16U Singles	Judy Zhang	Annis Frimpong
Boys 14U Singles	George Diable	Jake Kane-Wood
Girls 14U Singles	Julie Oprchal	Judy Zhang
Boys 14U Doubles	George Diable & Matthew McLain	Jake Kane-Wood & Alex Mirrington
Girls 14U Doubles	Isabel McLain & Eloise Newberry	Ruby Marriage & Charlotte Spratling
Mixed 14U Doubles	Matthew McLain & Isabel McLain	Arran Avril & Anais Gauthier
Boys 12U Singles	Alex Bickerton	Tom Kirnon
Girls 12U Singles	Aditi Anil	Kate Murray
Boys 11U Singles	Tom Kirnon	Matyas Oprchal
Girls 11U Singles	Iris Grosso	Olivija Konstantinova
Boys 10U Singles	Matyas Oprchal	Luke Pratten
Girls 10U Singles	Iris Grosso	Olivija Konstantinova
Boys 9U Singles	Henry Harrison	Daniel Nott
Girls 9U Singles	Milla Bray	Anya-Leigh Lewis
Boys 8U Singles	Daniel Nott	Derek Yu
Girls 8U Singles	Chandni Sethi	Georgiana Hinh

## LTA Awards 2021

(presented in 2022)

Category	National Winner
Player of the Year	Emma Raducanu
School of the Year	Deal Parochial CofE Primary School
Category	National Runners-Up
Junior Play of the Year	Jack Pinnington Jones
Category	South East Regional Winner & National Shortlister
Lifetime Achievement Award	Graham Sutherland (Wye LTC)
School of the Year	Deal Parochial CofE Primary School
Category	South East Regional - Highly Commended
Disability Programme Award	Bexley Mencap
Young Volunteer of the Year	Jack Rowland (Shooters Hill LTC)
Performance Coach of the Year	Tom Samson (Canterbury TC and Wye LTC)
Development Coach of the Year	Den Saunders (Hayes (Kent) LTC)
Club of the Year	Sellindge Tennis Club
Communities & Parks Award	Neil Biddle from Swanley Community Tennis
Official of the Year	Georgia Lucey
Category	County Winner
Player of the Year	Emma Raducanu
Junior Player of the Year	Hugo Coquelin
Team of the Year	Men's Summer County Cup Team
Junior Team of the Year	9U Boys County Cup Team
Club (5+ courts) of the Year	The Sundridge Park Club
Club (1 to 4 courts) of the Year	Sellindge Tennis Club
School of the Year	Deal Parochial CofE Primary School
Performance Coach of the Year	Tom Samson (Canterbury TC and Wye LTC)
Development Coach of the Year	Den Saunders (Hayes (Kent) LTC)
Volunteer of the Year	Vanessa Oakes (Whitstable LTC)
Young Volunteer of the Year	Jack Rowland (Shooters Hill LTC)
Official of the Year	Georgia Lucey
Competition of the Year	The Parklangley Club Competition
Disability Programme Award	Bexley Mencap
Lifetime Achievement Award	Graham Sutherland (Wye LTC)



<b>Winter County Cup 2021 - MEN</b>	<b>Group 1 at Bath</b>
Captain: <b>Andy Burgoyne</b>	Vice Captain: <b>Alastair Filmer</b>
<b>Team:</b>	Nick Brookes (3), Andy Burgoyne (reserve), Hugo Coquelin (1), James Davis (3), James Markiewicz (2), Anton Matusevich (3), Jack Pinnington Jones (3), Matt Short (2), Matthew Summers (3)
<b>Results:</b>	Kent beat Yorkshire 6-3, beat Essex 7-2, beat Lancashire 5-1
<b>Outcome:</b>	1st - National Champions
<b>Winter County Cup 2021 - LADIES</b>	<b>Group 1 at Bath</b>
Captain: <b>Holly Richards</b>	Vice Captain: <b>Jacqueline Darby</b>
<b>Team:</b>	Gabby Chidwick (3), Jacqueline Darby (reserve), Alice Gillan (3), Tabitha Howe (2), Sofia Johnson (3), Nell Miller (3), Olivia Parson (3), Holly Richards (reserve), Sarah Wray (3)
<b>Results:</b>	Kent beat Hampshire 6-3, beat Middlesex 5-4, beat Northumberland 5-2
<b>Outcome:</b>	1st - National Champions (5th year running!)
<b>Summer County Cup 2022 - MEN</b>	<b>Group 1 at Eastbourne</b>
Captain: <b>Alastair Filmer</b>	Vice Captain: <b>Sean Thornley</b>
<b>Team:</b>	Nick Brookes (5), Lewis Burton (5), James Davis (5), Alastair Filmer (reserve), Ben Gusic-Wan (2), James Markiewicz (4), Francis Sargeant (4), Matthew Summers (5), Sean Thornley (5)
<b>Results:</b>	Kent beat Essex 6-3, beat Hertfordshire 7-2, beat Cambridgeshire 7-2, beat Yorkshire 5-4, lost to East of Scotland 4-5
<b>Outcome:</b>	2nd - National Runners-up
<b>Summer County Cup 2022 - LADIES</b>	<b>Group 1 at Eastbourne</b>
Captain: <b>Holly Richards</b>	Vice Captain: <b>Jacqueline Darby</b>
<b>Team:</b>	Gabby Chidwick (4), Phoebe Ecuyer-Dale (5), Sofia Johnson (1), Natasha Munday (5), Olivia Parson (5), Alaia Rubio Perez (3), Holly Richards (reserve), Abby Taylor (3), Phoebe Watton (4), Sarah Wray (5)
<b>Results:</b>	Kent lost to Surrey 3-6, lost to Hampshire 3-6, lost to Hertfordshire 0-9, lost to Yorkshire 3-6, lost to Northumberland 0-6
<b>Outcome:</b>	6th - relegated to Group 2

## 35 & over County Cup Results

<b>MEN - Group 1 at Eastbourne</b>	Captain: <b>Jim May</b>
<b>Team:</b>	Andy Burgoyne (3), Zane Cheeseman (3), Jim May (3), Paddy May (3), Steve Weatherall (1)
<b>Results:</b>	Kent beat Sussex 4-1, beat Hertfordshire 3-2, lost to Surrey 0-3
<b>Outcome:</b>	2nd - National Runners-up
<b>LADIES - Group 4 at Eastbourne</b>	Captain: <b>Lindsey Goddard</b>
<b>Team:</b>	Lindsey Goddard (3), Kate Hands (3), Vicky Lohead (2), Chloe Taylor (3), Karen Thomas (3)
<b>Results:</b>	Kent beat Nottinghamshire 3-2, beat Dorset 5-0, beat Berkshire 3-2
<b>Outcome:</b>	1st - promoted to Group 3



## Junior County Cup Results

<b>County Cup - BOYS 18U</b>	<b>Group 1 at Bath</b>
Captain: <b>Max Robinson</b>	Vice Captain: <b>Tom Jarvis</b>
<b>Team:</b>	Alexis Chastang (1), Martino Colabella (1), Hugo Coquelin (3), Pranav Devaguptapu (3), Ben Gusic-Wan (3), Angus Howard (3), Sebastian McDonnell Palomares (3), Matthew Pickering (3), Timothy Viding (3), Joshua Ward (3)
<b>Results:</b>	Kent beat Yorkshire 7-2, beat Middlesex 7-2, beat Lancashire 6-1
<b>Outcome:</b>	1st - National Champions
<b>County Cup - GIRLS 18U</b>	<b>Group 2 at Bromley Tennis Centre</b>
Captain: <b>Pippa Lane</b>	Vice Captain: <b>Holly Richards</b>
<b>Team:</b>	Chloe Cleaver (3), Niamh Egan (3), Amelia Monteith (2), Darshani Popat (reserve), Iris Nasir (1), Eloise Newberry (3), Lois Newberry (withdrew due to injury), Alaia Rubio Perez (3), Daniella Scotland (3), Emma Slack (2)
<b>Results:</b>	Kent beat Somerset 7-2, lost to Cheshire 3-6, lost to Essex 4-5
<b>Outcome:</b>	3rd

<b>County Cup - BOYS 14U</b>	<b>Group E at Bridgend, South Wales</b>
Captain: <b>Tom Jarvis</b>	Vice Captain: <b>Lewis Whiteley</b>
<b>Team:</b>	Arran Avril (reserve), Tommy Cuomo (4), Nate De Marivales (3), George Diable (4), Matthew McLain (4), Alex Mirrington (4)
<b>Results:</b>	Kent beat Sussex 5-1, beat Dorset 4-2, beat Hertfordshire 4-2, lost to South Wales 3-3
<b>Outcome:</b>	2nd
<b>County Cup - GIRLS 14U</b>	<b>Group E at Sherborne, Dorset</b>
Captain: <b>Martin Whitehouse</b>	Vice Captain: <b>Ellen Cramer-Todd</b>
<b>Team:</b>	Eva Hutchins (4) Ruby Marriage (4), Leticia Romanova (4), Charlotte Spratling (4), Bella Thomson (4)
<b>Results:</b>	Kent beat Gloucestershire 6-0, beat Hampshire 5-1, beat Sussex 6-0, lost to Dorset 2-4
<b>Outcome:</b>	2nd

<b>County Cup - BOYS 12U</b>	<b>Group E at Southdown, Sussex</b>
Captain: <b>Dom Cobby</b>	Vice Captain: <b>Will Carnegie</b>
<b>Team:</b>	Alex Bickerton (4), Justin Kravets (3), James Meachen (4), Jayden Oladimeji (4), Timothee Poggi (4)
<b>Results:</b>	Kent lost to Sussex 1-5, beat Dorset 5-1, lost to Hampshire 1-5, lost to South Wales 2-4
<b>Outcome:</b>	4th
<b>County Cup - GIRLS 12U</b>	<b>Group E at Sufon, Surrey</b>
Captain: <b>Katy Taylor</b>	Vice Captain: <b>Ania Chwiejczak</b>
<b>Team:</b>	Julia-Janelle Kierczak-Ogwuche (2), Isabel McLain (3), Julie Oprchal (3), Isla Smith (2), Judy Zhang (3)
<b>Results:</b>	Kent lost to Dorset 3-3, beat Gloucestershire 6-0, beat Sussex 5-1
<b>Outcome:</b>	3rd

<b>County Cup - BOYS 11U</b>	<b>Group G at Bromley Tennis Centre</b>
Captain: <b>Shane Theobald</b>	Vice Captain: <b>Toby Churchill</b>
<b>Team:</b>	Tom Kirnon (4), Zak Kirnon (4), James Meachen (4), Timothee Poggi (4), Nathan Wang (3)
<b>Results:</b>	Kent beat Essex 4-2, lost to Surrey 2-4, beat Hertfordshire 5-1, beat Sussex 6-0
<b>Outcome:</b>	2nd
<b>County Cup - GIRLS 11U</b>	<b>Group G at Banstead Downs, Surrey</b>
Captain: <b>Sarah Wray</b>	Vice Captain: <b>Chloe Taylor</b>
<b>Team:</b>	Zarina Lin (2), Isabel McLain (4), Milena Nahornaya (4), Isla Smith (4), Judy Zhang (4)
<b>Results:</b>	Kent lost to Essex 2-4, beat South Wales 6-0, beat Surrey 4-2, beat Hampshire 5-1
<b>Outcome:</b>	2nd

<b>County Cup - BOYS 10U</b>	<b>Group G at Sundridge Park</b>
Captain: <b>Brett Spencer-Stephens</b>	Vice Captain: <b>Sam Smith</b>
<b>Team:</b>	Darnay Hunnygen (8), Tony Keohane (8), Eoin Lambourn (5), Matyas Oprchal (8), Luke Pratten (8)
<b>Results:</b>	Kent beat Surrey 5-1, beat Essex 5-1, beat Hertfordshire 6-0, beat Sussex 6-0 National Play-offs: beat East of Scotland 6-0, beat Cambridgeshire 4-2, beat Oxfordshire 6-0 NATIONAL FINAL: beat Yorkshire 3-3
<b>Outcome:</b>	National Champions
<b>County Cup - GIRLS 10U</b>	<b>Group G at Oakwood LTC, Crayford</b>
Captain: <b>Harry Bushnell</b>	Vice Captain: <b>Sasha Hill</b>
<b>Team:</b>	Milla Bray (4), Iris Grosso (4), Olivija Konstantinova (2), Kate Murray (4), Rosie Thomson (4), Stephanie Yu (2)
<b>Results:</b>	Kent lost to Surrey 3-3, beat Sussex 5-1, beat South Wales 6-0, beat Gloucestershire 6-0
<b>Outcome:</b>	2nd

<b>County Cup - BOYS 9U</b>	<b>Group G at National Tennis Centre</b>
Captain: <b>Tom Samson</b>	Vice Captain: <b>Lucy Morice-Jones</b>
<b>Team:</b>	Henry Harrison (7), Lewis Kefford-Watson (4), Harrison Mirrington (7), Matyas Oprchal (7), Jake Spooner (7)
<b>Results:</b>	Kent beat Middlesex 4-2, beat Sussex 5-1, beat Essex 6-0 National Play-offs: beat Berkshire 4-2, beat Hertfordshire 4-2, beat Avon 6-0 NATIONAL SOUTH FINAL: beat Warwickshire 5-1
<b>Outcome:</b>	National South Champions
<b>County Cup - GIRLS 9U</b>	<b>Group G at National Tennis Centre</b>
Captain: <b>Tom Samson</b>	Vice Captain: <b>Lucy Morice-Jones</b>
<b>Team:</b>	Milla Bray (3), Claudia Guri (3), Kayla Kuranga (3), Tilly Shaw (3), Eva Vitorino Hiietamm (3)
<b>Results:</b>	Kent beat Essex 4-2, lost to Middlesex 0-6, beat Sussex 5-1
<b>Outcome:</b>	2nd

## Seniors County Cup Results

<b>MENS 45s - Group 1</b>	<b>Captain - John Gotke</b>
<b>Team:</b>	Dave Butt (1), Matt Coxall (1), Giles Davey (1), Malcolm Hilliar (3), Peter Kiss (1), Nick Lambrou (1), Neil Scotland (1), Chris Smith (4), Dave Smyth (3)
<b>Results:</b>	Kent lost to Middlesex 1-4, beat Durham & Cleveland 5-0, beat Somerset (w/over), lost to Surrey 1-4, beat Lancashire 5-0
<b>Outcome:</b>	3rd - remain in Group 1
<b>MENS 50s - Group 1</b>	<b>Captain - Jason Baker</b>
<b>Team:</b>	Jason Baker (5), Dave Butt (5), Andy Candler (5), Nick Lambrou (4), Neil Scotland (1), Martin Whitehouse (1)
<b>Results:</b>	Kent beat Hampshire 3-2, lost to Warwickshire 2-3, beat Staffordshire 3-2, beat South Wales 5-0, beat Surrey 3-2
<b>Outcome:</b>	2nd - remain in Group 1
<b>MENS 55s - Group 1</b>	<b>Captain - Dino Skeete</b>
<b>Team:</b>	Peter Elsdon (2), Simon Gent (1), Phil Lynch (4), Dave McSorley (3), Dave Scott (4), Dino Skeete (4), Kevin Turner (1), David Willis (1)
<b>Results:</b>	Kent lost to Essex 1-4, beat Oxfordshire 5-0, lost to Leicestershire 1-4, lost to Hereford & Worcester 2-3, beat Middlesex 4-1
<b>Outcome:</b>	3rd - remain in Group 1
<b>MENS 60s - Group 2</b>	<b>Captain - Keith Gill</b>
<b>Team:</b>	Mick Bull (2), Colin Coombes (4), Jasper Cooper (1), Colin Edmonton (1), Keith Gill (2), Hamid Irshad (1), Nigel Jordan (1), Malcolm Smith (3), John Watton (4)
<b>Results:</b>	Kent beat Hereford & Worcester 5-0, lost to Buckinghamshire 2-3, beat Gloucestershire 5-0, beat Oxfordshire 5-0
<b>Outcome:</b>	1st - promoted to Group 1 for 2023
<b>MENS 65s - Group 1</b>	<b>Captain - Jasper Cooper</b>
<b>Team:</b>	Rob Andrew (1), Jasper Cooper (5), Robin Garratt (5), Andy Loft (2), Ian Milligan (2), Chris Morgan (5)
<b>Results:</b>	Kent lost to Surrey 1-4, beat Hampshire 3-2, beat Middlesex 5-0, lost to Essex 2-3, beat Lancashire 3-2
<b>Outcome:</b>	4th - remain in Group 1
<b>MENS 70s - Group 1</b>	<b>Captain - Jonathan Potter</b>
<b>Team:</b>	Keith Clark (1), Chris Mackenzie (4), Peter Pharo (6), Jonathan Potter (6), Bob Whitehead (6), Dave Willan (3)
<b>Results:</b>	Kent beat Dorset 3-2, beat Yorkshire 4-1, beat Middlesex 5-0, beat Warwickshire 5-0, beat Surrey 3-2 NATIONAL FINAL: beat Essex 5-0 (w/over)
<b>Outcome:</b>	1st - National Champions
<b>MENS 75s - Group 1</b>	<b>Captain - Gary Sims &amp; Keith Clark</b>
<b>Team:</b>	Bill Baxendale (2), Keith Clark (4), Ray Murray (4), Jeff Pearson (1), Brian Robinson (4), Stuart Smith (1)
<b>Results:</b>	Kent lost to Surrey 2-2, beat Hertfordshire 3-1, beat Essex 4-0, beat Lancashire 2-2
<b>Outcome:</b>	2nd - remain in Group 1

<b>LADIES 40s - Group 1</b>	<b>Captain - Kate Hands</b>
<b>Team:</b>	Ashling Carroll (1), Alessia Cuomo (4), Lindsay Gardiner (2), Kate Hands (4), Chloe Taylor (4), Karen Thomas (5)
<b>Results:</b>	Kent lost to Leicestershire 1-4, lost to Surrey 1-4, beat Dorest (w/over), lost to Lincolnshire 1-4, lost to Lancashire 0-5
<b>Outcome:</b>	5th - relegated to Group 2
<b>LADIES 50s - Group 1</b>	<b>Captain - Suzy Russell</b>
<b>Team:</b>	Jacqui Baker (1), Lisa King (2), Hazel Lindfield (1), Gillian Newsom (3), Jo Robinson (3), Suzy Russell (4), Nayla Solh (1), Gillie Turner (1)
<b>Results:</b>	Kent lost to Surrey 0-5, lost to Yorkshire 2-3, lost to Hertfordshire 1-4, beat Sussex 4-1, beat Gloucestershire (w/over)
<b>Outcome:</b>	5th - relegated to Group 2
<b>LADIES 55s - Group 1</b>	<b>Captain - Nayla Solh</b>
<b>Team:</b>	Sue Boffey (3), Keri Jakes (3), Joanna Moore (4), Nayla Solh (5), Gillie Turner (5)
<b>Results:</b>	Kent beat Gloucestershire 5-0, beat Buckinghamshire 4-1, beat Lincolnshire 5-0, beat South Wales 4-1 NATIONAL FINAL: beat Surrey 3-2
<b>Outcome:</b>	1st - National Champions
<b>LADIES 60s - Group 1</b>	<b>Captain - Jane Gentle</b>
<b>Team:</b>	Jane Gentle (5), Caroline Griffiths (3), Sally Holmes (5), Hazel Lindfield (5), Linda McSorley (2)
<b>Results:</b>	Kent beat South Wales 3-2, beat Yorkshire 3-2, beat Surrey 3-2, beat Essex 4-1 NATIONAL FINAL: beat Hampshire 3-2
<b>Outcome:</b>	1st - National Champions
<b>LADIES 65s - Group 2</b>	<b>Captain - Sheila Badger</b>
<b>Team:</b>	Sheila Badger (4), Jane Bell (1), Anne Gibbs (4), Vanessa Johnson (1), Jo Salmon (1), Norma Smith (2), Caroline Stubbings (1), Sarah Van-Doren (2)
<b>Results:</b>	Kent beat Essex 4-0, lost to Hertfordshire 2-2, lost to Lancashire 2-2, beat Yorkshire 3-1
<b>Outcome:</b>	3rd - remain in Group 2
<b>LADIES 70s - Group 1</b>	<b>Captain - Myra Hunter</b>
<b>Team:</b>	Mary Cannon (1), Yvonne Childs (2), Myra Hunter (3), Kay Mileham (3), Pat Smith (1), Alison Sullivan (2), Chris Troke (1)
<b>Results:</b>	Kent beat Lancashire 3-1, beat Buckinghamshire 3-1, lost to Yorkshire 1-3
<b>Outcome:</b>	2nd - remain in Group 1
<b>LADIES 75s - Group 1</b>	<b>Captain - Janet Broster</b>
<b>Team:</b>	Marcia Ackers (4), Margaret Baker (5), Janet Broster (2), Sue Colvin (6), Judy Maitland (3), Sarah Pout (3), Flick Shipton (4)
<b>Results:</b>	Kent beat Shropshire 3-1, beat Lancashire 4-0, beat Cambridgeshire 4-0, beat Hampshire 3-1, beat Warwickshire 3-1 NATIONAL FINAL: beat Northumberland 2-2
<b>Outcome:</b>	1st - National Champions

## County Colours Awarded 2022

There were no Men's or Ladies County Colours awarded this year.

The following players were awarded their colours in recognition of representing Kent Tennis teams.

### Junior Boys

- Alexis Chastang
- Martino Colabella
- Angus Howard
- Darnay Hunnygen
- Tony Keohane
- Eoin Lambourn
- Joshua Ward
- Sebastian McDonnell-Palomares
- Matthew Pickering
- Luke Pratten
- Timothy Viding

### Junior Girls

- Chloe Cleaver
- Niamh Egan
- Eloise Newberry
- Lois Newberry
- Emma Slack

### Seniors Men

- Jason Baker
- Chris Mackenzie

### Seniors Ladies

- Sue Colvin
- Gillie Turner

## County Cup Race 2022

The LTA's County Cup Race takes into account all County Cup results from 9U through to Men's, Ladies and 35s County cup events. Base points are awarded on how high a division a team is in, and additional points for a win. In the junior, there are additional points to be won if you qualify for a national play offs event.

Kent's final position will be decided after the Winter County Cup at the end of November, where Kent are the defending champions in both Men's and Ladies.

### LTA COUNTY CUP EVENTS 2022 – Overall County Leaderboard (as of 24.08.2021)

COUNTY	POINTS	NATIONAL TITLES WON (Seniors Titles do not carry points)
1. Yorkshire	218	3 – Boys 9U North, Men's 45s, Men's 55s
2. Surrey	216	7 - Men's 35s, Boys 11U, Girls 10U, Men's 50s, Men's 65s, Ladies 70s, Men's 75s
3. Middlesex	213	3 - Girls 18U, Boys 12U, Girls 9U South, Ladies 40s, Ladies 50s
4. Avon	184	-
5. Kent	183	7 - Boys 18U, Boys 10U, Boys 9U South, Ladies 55s, Ladies 60s, Men's 70s Ladies 75s
6. Warwickshire	176	-
7. Hertfordshire	175	2 - Ladies Summer, Men's Summer
8. Cheshire	173	-
9. Lancashire	166	-
10. Essex	162	1 – Girls 11U
11. Cambridgeshire	158	1 – Girls 9U North
12. Berkshire	155	-
13. Scotland - East	154	-
Wales - South	154	1 - Boys 14U
15. Leicestershire	153	2 - Ladies 35, Men's 60s

## Kent Primary Schools Tennis

Events	Champions	Runners Up
8U Boys	New Beacon	Amherst
8U Girls	Amherst	Sevenoaks Primary School
9U Boys	Eltham College	New Beacon A
9U Girls	Granville	St Michaels Prep School
10U Boys	Sevenoaks Primary School	New Beacon
10U Girls	Walthamstow Hall A	Walthamstow Hall B

## LTA Youth Schools - Kent

Division	BOYS Years 7 & 8	GIRLS Years 7 & 8
1a	Sevenoaks School A	Sevenoaks School A
1b	Sevenoaks School B	-
2a/East 1	Norton Knatchbull B	Bromley High School A
2b/East 2	Wellesley House School	Walthamstow Hall A
2c/North	Colfes School	Kent College A
2d/West	Sutton Valence	<i>Not completed</i>
2e	-	Weald Grammar School

Division	BOYS Years 9 & 10	GIRLS Years 9 & 10
1a	Sevenoaks School B	Sevenoaks School A
1b	Sevenoaks School A	-
2a/North	City of London School	Dartford Grammar Girls School
2b/South 1	The Kings School Canterbury	Bromley High School B
2c/South 2	Norton Knatchbull C	The Kings School Canterbury
2d/West	Tunbridge Wells Grammar School for Boys	Weald Grammar School

## National League - Winter

Division	Boys Team	Division	Girls Team
18U - 1A	Avenue Tennis	18U - 1A	Bromley Sports Club
16U - 1A	Bromley Sports Club A	16U - 1A	Chipstead Place
16U - 1B	<i>Not completed</i>	16U - 1B	<i>Not completed</i>
16U - 1C	Oakwood	14U - 1A	Crescent
16U - 1D	Sundridge Park	14U - 1B	Chipstead Place
14U - 1A	Bromley Sports Club A	14U - 1C	<i>Not completed</i>
14U - 1B	Blackheath B	12U - 1A	Sevenoaks Tennis Centre B
14U - 1C	Bromley Sports Club B	12U - 1B	Blackheath LTC
14U - 1D	Kings Hill Community A	11U - 1A	Sevenoaks Tennis Centre A
14U - 1E	Headcorn	10U - 1A	The Parklangley Club
12U - 1A	Bromley Sports Club	10U - 1B	Crescent
12U - 1B	Oakwood	9U	Bromley Tennis Centre A
11U - 1A	Avenue Tennis	8U - 1A	Bromley Tennis Centre A
10U - 1A	Sevenoaks Tennis Centre A	8U - 1B	Hollybush
10U - 1B	The Parklangley Club A	8U - 1C	Bromley Tennis Centre C
10U - 1C	The Parklangley Club B		
9U	The Parklangley Club A		
8U	The Parklangley Club A		

## National League Summer - Kent Open Divisions

Division	Mens	Ladies	Mixed
1	Freedom Leisure	Blackheath	Bexley
2	Canterbury	Avenue Tennis	-
3 - N/Lon	Bromley Sports Club	-	-
3 - C/E	Sevenoaks	-	-
4 - North	Sidcup Recreation Club	-	-
4 - E/W	Avenue Tennis	-	-
5	Wickham Park Tennis Club	-	-
6	Sundridge Park B	-	-
<b>NATIONAL LEAGUE COUNTY PLAY-OFFS - SOUTH EAST</b>			
<b>Mens</b>	Freedom Leisure A	beat Duke's Meadows (MIDDLESEX) 3-3 (on shoot out)	
<b>Ladies</b>	Blackheath	lost to St George's Hill (SURREY) 0-6	
<b>NATIONAL LEAGUE NATIONAL/REGIONAL DIVISIONS</b>			
<b>Mens</b>	A1 Pharmaceuticals	6th - National Open Men's South Division	



## National League Summer - Kent Junior Divisions

Division	Boys Team	Division	Girls Team
18U - 2A	Oakwood LTC A	18U - 2A	Sevenoaks Tennis Centre A
18U - 2B	Shooters Hill LTC		
16U - 1	Blackheath LTC		
16U - North 1	Bromley LTC		
16U - North 2	Sundridge Park		
16U - West	Sevenoaks Tennis Centre A	16U - West	Sevenoaks Tennis Centre A
14U - East/West 1	Gravesham LTC	14U - East/West 1	Sevenoaks Tennis Centre A
14U - East/West 2	Kings Hill Community Tennis B		
14U -North 1	The Parklangley Club A	14U -North 1	Gravesham
14U -North 2	The Parklangley Club B		
12U - 1	The Parklangley Club		
12U - 2 East/West 1	Meopham LTC	12U - 2 East/West 1	Chipstead Place LTC
12U - 2 East/West 2	<i>Not completed</i>		
12U - North 1	Gravesham LTC	12U - North 1	The Parklangley Club
12U - North 2	<i>Not completed</i>		
11U - 2	The Parklangley Club	11U - 2	Sevenoaks Tennis Centre A
Division	Mixed 10U	Mixed 9U	Mixed 8U
1	The Parklangley Club A	The Parklangley Club A	-
2	Avenue Tennis	Avenue Tennis	-
A/B	-	-	The Parklangley Club A
C/D	-	-	The Parklangley Club C
E	-	-	Bromley Tennis Centre D

Note - where there is no Division 1 for an age group, this is due to no teams entering the 4 plauer format of the competition

## Kent HEAD Inter-Club Doubles Leagues - Winter

Division	Veterans Mens	Veterans Ladies	
1	Tunbridge Wells 1	Sevenoaks 1	
2	Meopham LTC	Bearsted 2	
3	Sundridge Park 2	Hythe LTC	
4	Walmer LTC	-	
Division	Veterans Mens Over 60's Midweek	Veterans Mens Over 70's Midweek	Veterans Ladies Over 60's Midweek
1	Canterbury	Margate LTC	Herne Bay LTC
2	Herne Bay LTC	-	Broadstairs
3	Chipstead Place	-	-
4	Knoll (Orpington)	-	-

## Kent HEAD Inter-Club Doubles Leagues - Winter continued

Division	Mens	Ladies	Mixed
1	Sundridge Park	Sundridge Park	Sevenoaks 1
2	Tunbridge Wells LTC 2	The Parklanglely Club 1	Bromley Wendover 1
3	Knoll (Orpington) 1	Beckenham LTC 1	Knoll (Orpington) 1
4	Canterbury 3	Margate LTC	Beckenham 1
5	Knoll (Orpington) 2	Walmer LTC	Walmer 2
6	Bexleyheath	David Lloyd Beckenham 2	Trottscliffe 1
7	Kemsing 1	Kings Hill Community Tennis 1	Trottscliffe 2
8	Kemsing 2	Leigh Tennis Club	Tonbridge
9	Tonbridge 2	Margate LTC 2	-

## Kent HEAD Inter-Club Doubles Leagues - Summer

Division	Mens	Ladies	Mixed
1	Blackheath 2	Freedom Leisure 1	Sundridge Park
2	Gravesham 1	Bromley Wendover 1	Bromley LTC 1
3	Knoll 1	Bromley LTC 2	Sydenham
4	Sydenham 1	United	Beckenham LTC 2
5	David Lloyd Kingshill 3	Walmer LTC 2	Bearsted 1
6	Kemsing 1	Margate LTC 2	Bromley Wendover 3
7	United	Kings Hill Community Tennis 2	Tonbridge
8	Sidcup Recreation	-	-
9	Tonbridge 2	-	-
10	Ightham	-	-
Division	Veterans Mens Midweek	Ladies Midweek	Veterans Mixed midweek
1	Canterbury 1	Canterbury	Herne Bay LTC 1
2	Bearsted 1	Trottscliffe LTC 1	Broadstairs
3	Tunbridge Wells LTC	Hythe LTC 1	Herne Bay LTC 2
4	Chipstead Place LTC 1	Freedom Leisure	-
5	-	Avenue Tennis	-



YOUR CHOICE  
YOUR GAME

OFFICIAL BALL FOR KENT TENNIS



FOR A FASTER GAME  
*TOUR*

**HEAD**<sup>®</sup>

.COM



**KENT**  
TENNIS



01689 880757



info@kenttennis.org.uk



[www.kenttennis.org.uk](http://www.kenttennis.org.uk)