



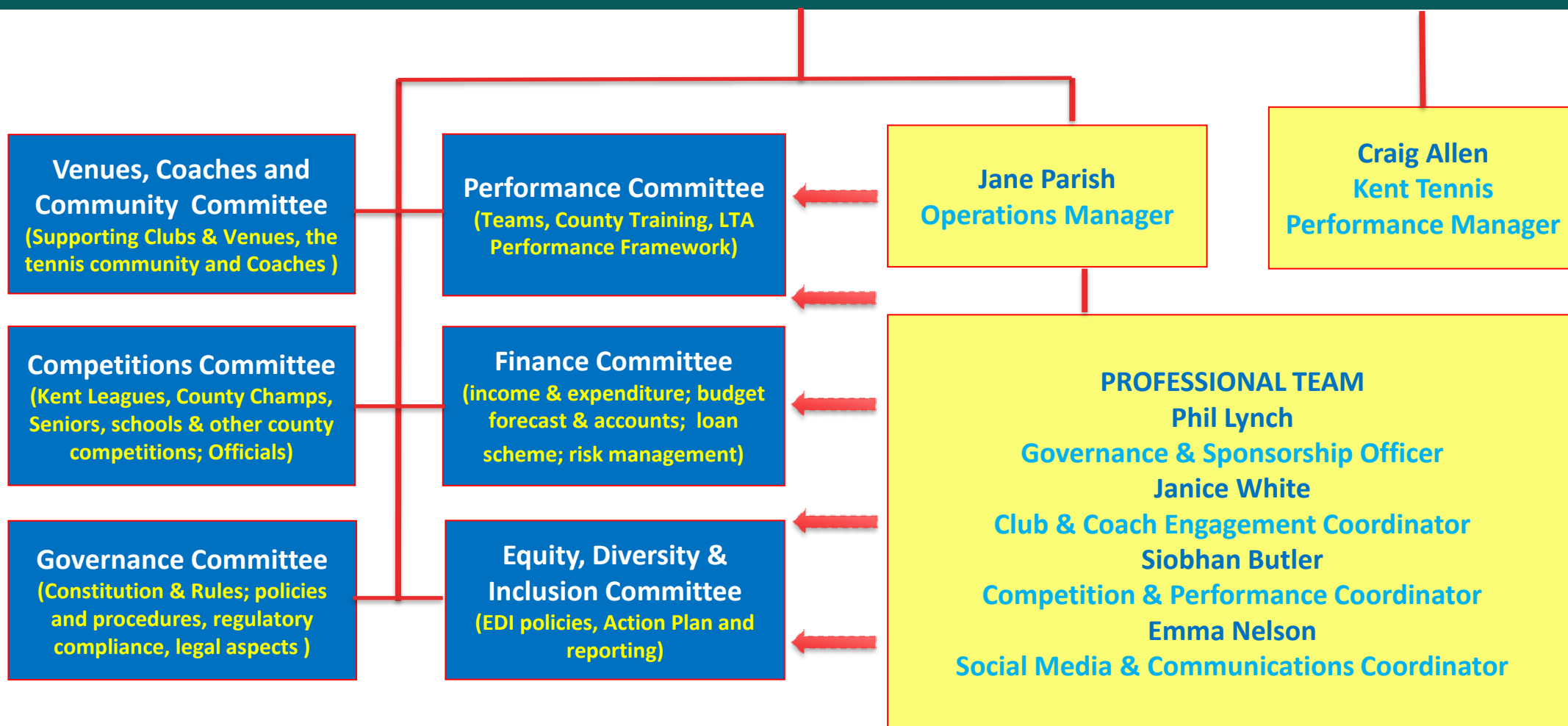
KENT
TENNIS

COMMITTEE MEMBERS 2025

Kent Tennis Committee Structure

KENT TENNIS BOARD OF TRUSTEES

Overall strategy, Kent Tennis Plan, Safeguarding, Kent Professional Team, Equity Inclusion and Diversity



BOARD OF TRUSTEES 2025

The Board for 2025 is shown below.

Board Member	Responsibility
Nigel Jordan	Chair of Board
Monica Kuszneruk	Treasurer
Charlotte Cornell	Secretary & Governance
Anna Wilson	Padel
Keith Gill	LTA Councillor; Inclusion Champion
Luke House	Coaches & Coach Education
Andy Candler	Venues & Communities Engagement
Jacqs Darby	Performance
Jason Sigba	EDI Strategic Adviser
Paolo Cuomo	Disciplinary Officer



COMMITTEES AND CHAIRS – 2025

The committees report to the Board and each includes at least one current Board member. The Committee chairs are responsible for all aspects of the governance of their committee including succession plans.

Committee	Chair
Performance	Jacqs Darby
Competitions	Jason Baker (Trustee is Paolo Cuomo)
Venues, Communities & Coaches	Andy Candler
Governance	Charlotte Cornell
Equity, Diversity & Inclusion	Keith Gill
Finance	Monika Kuszneruk

The Board retains overall responsibility for safeguarding and delivery against the annual Kent Plan. It also has overall responsibility for the financial and risk management of the organisation.

PERFORMANCE COMMITTEE

Responsible for all aspects of performance in the county, including County Teams across all ages, County Training and linking in with the LTA'S Performance Team.

Members

Jacqs Darby (Chair) - Board Member responsible for performance

Craig Allen - Kent Tennis Performance Manager

Siobhan Butler - Competitions and Performance Co-Ordinator

Alastair Filmer – Performance Tennis, Adult and O35 Teams

John Watton - Seniors Teams

Simon Grieve - Junior Coach



COMPETITIONS COMMITTEE

Responsible for county run competitions, including Kent Leagues, schools competitions, County Championships & Seniors county winter competition.

Members

Jason Baker (Chair) – Officials Network Chair & Referee

Siobhan Butler – Competitions & Performance Coordinator

Paolo Cuomo – Board member & Disciplinary Officer

Lisa King – District League Representative (North Kent LTA))

Vanessa Webb – Officials representative

Andy Lucey – Officials representative

Keeley Wicks – Kent Inter-Club League Representative

Nigel Jordan – Board member & Seniors Player representative

Alex Woolmington – Coaching representative

Estella Bryan – Parent representative

Karen Hodgson – Schools representative

VENUES, COACHES AND COMMUNITY COMMITTEE

- Responsible for supporting venues and the community in their effective running and attracting people to tennis.

Members

Andy Candler (Chair) - Board Member responsible for venues

Janice White - Club and Coach Engagement Co-ordinator

Nigel Jordan - Open Court Lead & Board member

Anna Wilson – Board Member responsible for Padel

Daniel Hodgson – Youth Development

Luke House – Board member responsible for Coaches Network

Emma Nelson– Kent Venue Representative (Oakwood)

Sarah Langford – Kent Venue Representative (Bromley Tennis Centre)

Mimi Hoffman – Kent Venue Representative (Horsmonden)

Mary Evans - Kent Tennis Awards

Vanessa Oakes – Kent Venue Representative (Whitstable)

Jason Sigba – Inclusion and Diversity

Rob Slater – Kent Venue Representative-Meopham

GOVERNANCE COMMITTEE

- Responsible for ensuring effective governance is in place across all aspects of the association, including policies and procedures, constitution and compliance with the relevant rules and regulations including the LTA's County Governance Framework. Will also assume responsibility for the CIO governance once approved.

Members

Charlotte Cornell (Chair) - Secretary

Jason Baker - Governance Advice (former Secretary)

Phil Lynch – Governance & Sponsorship Officer

John Darby - Life Vice-President, Governance Advice (former Secretary)

Andrew Hunter – Legal Representative

Nigel Jordan – Chair of Board

Jane Parish – Operations Manager

EQUITY, DIVERSITY & INCLUSION COMMITTEE

- Responsible for ensuring Kent Tennis achieves its mission to transform tennis for communities in Kent; making tennis relevant, accessible welcoming and enjoyable

Members

Keith Gill (Chair) – Board Member, Inclusion Champion, LTA Councillor

Andy Candler – Board member responsible for clubs, community & venues

Nigel Jordan – CIO Chair and Board Member; Open Court Lead

Jason Sigba – Board Member and EDI Strategic Adviser

Jane Parish – Operations Manager

Tom Defrates – Disability Tennis adviser

Luke House – Board member and Coaches Lead

Daniel Hodgson - Youth Group

Cheryl Ewan – Data Collection & Management Analyst

Paul Obey – Disability interest

Emma Nelson – Communications Co-ordinator, Kent Tennis

Rob Slater – Venue and Community Engagement

FINANCE COMMITTEE

- Responsible for ensuring the day-to-day finances of Kent Tennis are managed effectively, including appropriate processes and controls in place and agreement of any County loans. Overarching responsibility lies with the Board of Trustees.

Members

Monika Kuszneruk (Chair) – Treasurer

Keith Gill – Sponsorship, LTA Councillor and Board member

Tony Fisher - Finance adviser, Supporter's Club

Paul Obey – Member of loan panel

Pamela Butler – County loan scheme

