



# Kent Tennis Awards Programme 2023

Awards Presented on  
Saturday 10 February 2024

Hosted by Craig Allen



# Awards Presentation

Category	Finalist	Presented By
Player:	Jasper Cooper	Malcolm Smith
Team:	Men's 60s & Men's 70s County Teams	Malcolm Smith
Club 1 – 4 Courts:	Headcorn Cricket & Tennis Club Martin Dene LTC	Tim Freeman
Club 5+ Courts:	Avenue Tennis Bromley Tennis Centre Hythe LTC Wye LTC	Tim Freeman
Volunteer:	Russell Gula Agnieszka Kouakousse John Ratcliffe	Sandi Procter
Rising Star:	Charlie Clements Samuel Morgan Alberta Sheriff	Sandi Procter
Development Coach:	Sally Graham Adam Reavely Sophia Thomas Tom Warburton	Nigel Jordan
Performance Coach:	Lauren Harrington Tom Martin-Jarvis Max Robinson	Nigel Jordan
Competition:	Kent County Championships Kent Tennis Family Cup Tunbridge Wells LTC – The Goldsmith Cup	Andy Candler
Official:	Faizal Jivraj Andy Lucey Graham Silvester	Andy Candler
School:	Alexander McLeod Primary School Deal Parochial Primary School Mundella Primary School	Keith Gill
University	The University of Kent	Keith Gill
Tennis For All	Sundridge Park's Padel & Inclusive Programme Whitstable LTC	Keith Gill
Connecting Communities	Infinity Tennis Whitstable LTC	Mary Evans
Parks	Marke Wood Tennis Hub TwistFizz	Mary Evans
Lifetime Achievement	Mike Bruce Stephen Woodley	Mary Evans

# Player of the Year

Presented by Malcolm Smith, Kent Tennis Board Chair for 2023

## Jasper Cooper

Jasper had an outstanding year, culminating in him becoming the World Champion in the Men's Over 70s Doubles and winning Bronze in the World Over 70s Mixed Doubles. He won three of the four British National events with singles victories at Wrexham, Wimbledon and Eastbourne together with doubles triumphs indoors at Wrexham, Bournemouth and Wimbledon. Representing Kent in the Men's Over 70s County Cup team he won 11 out of 11 rubbers and was instrumental in helping the team become Over 70s National County Cup Champions.



# Team of the Year

Presented by Malcolm Smith, Kent Tennis Board Chair for 2023

## Men's 60s & Men's 70s



Captain: Keith Gill

Team: Colin Coombes, Keith Gill, David Bulgin, Peter Elsdon & John Watton

Having won promotion last year from Division 2, the team fought hard in every match to reach the Senior County Cup National Finals, beating Leicestershire to become Over 60s National Champions. A remarkable achievement – from Division 2 to National Champions in 2 years!



Captain: Chris Morgan

Team: Rob Andrew, Jasper Cooper, Robin Garratt, Chris Morgan & Peter Pharo

As defending champions, the team was favourite to win this year and had a remarkable run to win their way through to becoming 2023 Over 70s National County Cup Champions without dropping a rubber in any match, including in the final against Dorset.

# CLUB OF THE YEAR 1 - 4 COURTS

Presented by Tim Freeman from Trevor May Contractors  
The winner will receive a voucher for £500 from Trevor May Contractors

## 2023 Finalists

### Headcorn Cricket & Tennis Club

Headcorn Tennis Club has 3 floodlit hard courts, with a clubhouse and licensed bar, The club has a thriving junior programme led by their Head Coach. The Head Coach also runs a holiday programme at a very affordable rate for the day. They held a Family Cup with over 30 adults and children taking part. In September Committee members attended a First Aid Course which was held at the club. Sam Ottaway, a very dedicated volunteer recently decided to book onto the Level 1 Coaching Assistant course to assist with the programmes. All ages are welcome at the club and they have very popular social tennis and Cardio sessions with numbers increasing over the year. The Men's, Ladies and Mixed Teams take part in the Kent, Ashford and Maidstone Leagues, all year around.

### Martin Dene LTC

Martin Dene is a volunteer led club with a three non-flood lit courts. The junior membership is going from strength to strength. The Head Coach engages with local schools to grow tennis both at the club and beyond. The Club is packed at the weekend. The coach works with the volunteers and the motivation and drive is incredible, they market the programme well. They also have their own club kit. Holiday clubs are very popular and camps are full most school holidays supporting working parents by opening early for breakfast and offering late collection . Young players are being developed and are encouraged to attend County Training trials and they have got into 7's, 8's & 9's and some of the players have been accepted into The Parklangley Performance Programme. The club has all of the correct safeguarding protocols, plus additions in place and the LTA are particularly impressed with the coaches' knowledge of safeguarding protocols and responsibilities.



## CLUB OF THE YEAR 5+ COURTS

Presented by Tim Freeman from Trevor May Contractors  
The winner will receive a voucher for £500 from Trevor May Contractors

### 2023 Finalists

#### Avenue Tennis

The Avenue Tennis Academy supports 25 high-performing 10-18 year olds, partially funded by the Avenue Tennis Charity. The club's commitment to junior development is evident with four juniors now receiving daily coaching during school hours via the Academy classroom. There is a dedicated Strength and Conditioning department hosting 60 juniors weekly. Recognised with an LTA 10U performance programme kitemark, the club has produced a junior player who won a LTA national event. The club successfully launched Prime Girls, introducing over 30 girls to tennis, with 50% transitioning to full programme membership. The club fosters a positive and inclusive environment, investing in its coaching team's development, an affordable pricing model, outreach to a Special Educational Needs school, and social events which foster a sense of community among members. Funding has been secured for two new artificial clay courts, set to open in Spring 2024.

#### Bromley Tennis Centre

Bromley Tennis Centre (BTC), is the first LTA Youth Registered Venue in London and the South East. BTC excels in junior development, with a 93% programme capacity and 80% of classes with waiting lists. In total the programme has grown by 1,500 attendances in 2023. Innovatively addressing the transition beyond Regional Player Development Centre funding, BTC's performance programme fills a crucial developmental gap. The coaching team has fostered strong relationships with community partners and promoted inclusivity through leadership development, with over 50 leaders completing LTA courses. The apprentice programme highlights BTC's commitment to education and mentorship creating a positive and inclusive club environment.



Avenue Tennis



Bromley Tennis Centre

## CLUB OF THE YEAR 5+ COURTS

Presented by Tim Freeman from Trevor May Contractors  
The winner will receive a voucher for £500 from Trevor May Contractors

### 2023 Finalists

#### Hythe LTC

Hythe LTC's outstanding achievements and community engagement are demonstrated by the club funding 143 junior memberships, offering free LTA Youth Start for 40 disadvantaged children and hosting the "East Kent Community Tennis Programme" with Tim Henman OBE. The club supports coaches' development, covering 50% of LTA course costs, and initiated walking tennis for Hythe Dementia Forum, which has been a great success. The club has raised £1,500+ for the Kent Air Ambulance. Inclusive coaching for all ages and abilities is offered and the club fosters a positive environment. Established in 1889, Hythe LTC remains dedicated to providing excellent tennis facilities, reflected in increased memberships, ongoing facility upgrades and integration with its local community.

#### Wye LTC

Wye is the first Kent club outside London to embrace Padel. The club promotes a range of membership rates and the addition of a floodlit Padel court and Pickleball have significantly boosted membership, now over 650. The club is thriving with 5 well-utilised courts (4 clay, 1 hard) and tennis programmes for all ages. Inclusivity and innovation shine through at this welcoming sports hub.



Hythe LTC



Wye LTC

# CATHIE SABIN VOLUNTEER OF THE YEAR

Presented by Sandi Procter, LTA President

## 2023 Finalists

### Russell Gula (Meopham LTC)

Russell has demonstrated exceptional dedication and leadership as the junior secretary of Meopham LTC. His impactful initiatives include increasing junior membership, implementing an extensive coaching programme, introducing social sessions, and engaging with local schools for free coaching. Russell's commitment to inclusion is evident through partnerships with Helen Allison School for children with autism, providing tennis opportunities for those from diverse backgrounds. Notably, he introduced free membership for children aged 6 and below, fostering a gentle entry into tennis. Russell's creativity and innovation as a volunteer extends to organizing box leagues, tournaments, and promoting branded club attire.



### Agnieszka Kouakousse (Abbey Wood Tennis)

Agnieszka has significantly impacted the club and local community. Her contributions, especially in coordinating matches and engaging with parents and other clubs, enabled the club's participation in external competitions. Agnieszka's inclusivity efforts shine through her seamless management of the club's members from diverse backgrounds, making tennis accessible to everyone. Her ability to inspire and motivate the team shows her creative and innovative approach to volunteering in tennis. Her dedication and creativity make her a standout individual.



### John Ratcliffe (Shooters Hill LTC)

John has made a significant impact at Shooters Hill LTC and throughout Kent. His selfless and knowledgeable approach has contributed to the success of both the club and the County. John mentors and supports various clubs, sharing insights on club development, recruitment, and governance. He ensures diversity and inclusion, fostering a welcoming environment for everyone, reflected in Shooters Hill's diverse membership. John's creative initiatives include regular zoom meetings across Kent addressing key topics, and introducing the Kent Tennis Day to showcase clubs. His innovative strategies enhance inclusivity and success, making John a dedicated and inspiring tennis volunteer.



# RISING STAR AWARD

Presented by Sandi Procter, LTA President

## 2023 Finalists

### Charlie Clements

#### (Canterbury LTC)

Charlie has been a valuable asset to the club through his two-year apprenticeship coaching programme. He has displayed exceptional confidence, willingness to learn, and adaptability in various roles. Charlie has actively engaged with players of all ages, demonstrating excellent communication with parents. His contributions include coaching LTA Youth, holiday camps, Cardio Tennis, Buddy Hits, and organising events. His inclusive approach treating everyone equally means he serves as a role model for younger players. He shows creativity by suggesting innovative ideas, actively participating in meetings, and contributing to events like the Coaches' Bake Off. His dedication to personal development includes attending training sessions, completing coaching courses, and sharing insights through presentations.



### Samuel Morgan

#### (Shooters Hill LTC)

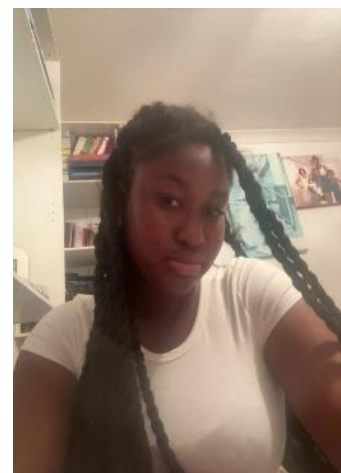
At 14 years of age Samuel has made remarkable strides in tennis, transitioning from a Shooters Hill Family Cup Champion to a dedicated leader and player. His inclusive approach as a volunteer is shown by his commitment to diverse groups, with 55% of those he works with from ethnic minorities. Samuel's creativity is evident in his innovative coaching techniques, using his own skills to inspire and demonstrate drills. His personal development is marked by increased confidence and resilience, notably as a member of the Men's first team. Samuel's journey, from volunteering to competitive success, positions him as an inspiring role model for the club's youth, embodying the transformative power of tennis.



### Alberta Sheriff

#### (Abbey Wood Tennis Club)

Alberta has consistently made outstanding contributions to the club and the local school, particularly in the After School Club. Her remarkable rapport with children has earned praise from both the club and parents. Alberta actively participates in tennis festivals and driven by her growing love for the game, has decided to embark on competitive play. She aspires to become a coach, showing her dedication to personal development. Alberta's role model status is evident, inspiring children, peers, and the community. Her innovative approach in introducing new activities highlights her creative volunteering efforts, making her a valuable asset to the tennis community.





# DEVELOPMENT COACH OF THE YEAR

Presented by Nigel Jordan, Kent Tennis Board of Trustees and LTA Board Member

## 2023 Finalists

### Sally Graham

**(Bromley Tennis Centre)**

Sally, with 13 years of dedicated service at Bromley Tennis Centre, stands out as a key asset to the team, particularly excelling as the Head of Tots Tennis. Coaching 127 Tots weekly, her sustained impact is evident in the positive memories and word-of-mouth referrals from former participants. Sally's outreach initiatives to local schools and nurseries shows her commitment to expanding tennis access. She consistently reviews and innovates the Tots curriculum, using LTA Youth resources creatively. Sally's welcoming approach ensures inclusivity for diverse learners, focusing on creating a warm environment for all. Her leadership extends to developing a robust team of tennis leaders, emphasising a commitment to personal and team development.



### Adam Reavely

**(Chipstead Place LTC, Sevenoaks Tennis Centre & Hildenborough Tennis Club)**

Adam has built up an excellent junior programme at Chipstead Place. The standard of his players is exceptional for a small club demonstrated by teams participating in every age group of the Kent Winter and Summer Junior Leagues. Adam's strategic link with a nearby primary school and the establishment of Red, Orange, and Green team squads contribute to sustained success in school events. He has made tennis accessible and enjoyable for juniors, fostering loyalty and is popular with the players. Adam's leadership is reflected in his commitment to personal development and the cultivation of excellent leaders within the club.



# DEVELOPMENT COACH OF THE YEAR

Presented by Nigel Jordan, Kent Tennis Board of Trustees and LTA Board Member

## 2023 Finalists

### Sophia Thomas

(Martin Dene LTC)

Sophia, an LTA Performance coach at Martin Dene LTC, has made an outstanding contribution to tennis. Under her guidance, the junior programme has thrived, accommodating over 100 participants weekly. She innovatively extended coaching to local schools and initiated before-school classes, demonstrating her commitment to accessibility. Sophia's coaching approach is inclusive, welcoming children of diverse backgrounds, including those with special educational needs. Her emphasis on safeguarding is evident in collaborative efforts with the club committee and welfare officer. Sophia has not only expanded her coaching team but also nurtured their professional growth, emphasising teamwork and leadership.



### Tom Warburton

(Shooters Hill LTC)

Tom's impactful coaching at Shooters Hill LTC is marked by exceptional contributions, innovative coaching initiatives and a commitment to diversity and leadership. Tom shows a dedication to professional development, he revived the coaching team, attracting three full-time coaches. Tom's diverse coaching programme, aligned with LTA Youth frameworks, significantly increased memberships. Through the Open Court programme Tom has undertaken a course on walking tennis and secured funding from the LTA. This will help people who have been injured or those who find playing tennis difficult creating a new inclusive pathway. Tom's leadership extends beyond the club, collaborating with Greenwich University and local schools, fostering talent recognition and community outreach.



# PERFORMANCE COACH OF THE YEAR

Presented by Nigel Jordan, Kent Tennis Board of Trustees and LTA Board Member

## 2023 Finalists

### Lauren Harrington

#### (Bromley Tennis Centre)

Lauren, a dedicated performance coach at Bromley Tennis Centre, excels in developing junior and wheelchair tennis players achieving significant tournament success under her guidance. Lauren's role as the only female member of the performance team makes her a compelling role model and she demonstrates innovation, professionalism, and integrity. Committed to her personal development, she is pursuing a Level 5 Master Performance coach course. Lauren's dedication makes her an invaluable asset, ensuring high coaching standards. Her dual role as a coach and strength & conditioning expert reflects a holistic approach to player development.



### Tom Martin-Jarvis

#### (Bromley Sports Club)

Tom has made a significant impact on players' development, fostering a positive and enjoyable tennis environment. Testimonials highlight his exceptional coaching skills, psychological support, and the ability to create tailored sessions. As an outstanding role model, Tom inspires players and showcases professionalism. His commitment to personal development is evident through tournament participation, coaching certifications, and captancy of the Kent 18U boys' team. Tom's dedication, innovation, and passion contribute to a thriving tennis community.



### Max Robinson

#### (Sevenoaks Tennis Centre)

Max is both a LTA Performance Coach and a Kent Tennis County Captain. During his 15 years at Sevenoaks Tennis Centre and Sevenoaks LTC he has worked with players from beginner level to adult team players, several world-ranked seniors and junior players. He is an outstanding role model who shows innovation, professionalism, and integrity. He continues to display a commitment to his own personal development and is in the process of completing his LTA Coach Tutor Qualification. Max has worked as a County Coach for a number of years, originally with the 12U boys who won the National Title in 2013 and more recently the 18U Boys, who won back-to-back National titles in 2022 and 2023. Max takes his role as a County Captain very seriously, adopting a very thorough and professional approach, so it is no surprise that he has enjoyed such successes over the years.



# COMPETITION OF THE YEAR

Presented by Andy Candler, Kent Tennis Board of Trustees

## 2023 Finalists

### Kent County Championships

Kent's County Championships in 2023 saw a surge in players and entries and had a particular focus on diversifying participation. The event, a collaboration between Kent Tennis and Bromley Tennis Centre, welcomed players from diverse backgrounds. Led by Jason Baker (Tournament Referee), Siobhan Butler (Kent Tennis) and Sarah Langford (BTC), the tournament demonstrated strong organisation, leadership and teamwork, ensuring an enjoyable experience for players. Innovations included off-court activities and partnerships with local clubs, resulting in increased interest. With players from 51 clubs and an inclusive tennis festival, the event achieved broad participation, reflecting a commitment to making tennis accessible and enjoyable for all.

### Kent Family Cup

The Kent Tennis Family Cup at Meopham LTC showed outstanding organisation, with 24 pairs participating in a 3-hour time window. This inclusive event as part of the Kent Tennis Day attracted over 250 spectators, including local officials. LTA Referee Susie Reeves efficiently and safely managed the competition which connected clubs county-wide and encouraged parents and adults to engage in tennis competitively. The innovative Family Cup, promoting inclusivity and collaboration, marked a successful initiative to make tennis accessible and enjoyable for people from all backgrounds.

### Tunbridge Wells LTC – The Goldsmith Cup

The Brian Goldsmith Memorial Tournament at Tunbridge Wells LTC was an outstanding and inclusive event, honouring the late club administrator. Welcoming 48 players across a range of skill levels, the tournament featured a unique format with timed matches and equal representation of men and women. Organised by the Tournament Committee and staff, the event had strong leadership and teamwork. Excellent communication was maintained with players, and safety practices were upheld with DBS-checked volunteers. The tournament innovatively linked with the local community, invited non-tennis players, and embraced inclusivity. The success ensures its establishment as an annual event on the club's calendar.



# OFFICIAL OF THE YEAR

Presented by Andy Candler, Kent Tennis Board of Trustees

## 2023 Finalists

### Faizal Jivraj

Faizal, a LTA Licensed Official, has made a significant impact in Kent by hosting numerous competitions, applying for 84 one-day grade 4/5 events in 2023. His dedication is highlighted by organising one of the few Play Your Way to Wimbledon open events in the County. Faizal excels in communication, delivering clear player/parent briefings and providing detailed post-event follow-ups for continuous improvement. He actively ensures gender balance in his events, combining categories to engage and recognise both genders. Faizal's commitment to ongoing learning is evident through his participation in Tennis Tournament Planner training and webinars, showcasing his dedication to delivering quality and inclusive tennis experiences.



### Andy Lucey

Andy, a LTA Licensed Official, has made an exceptional contribution to tennis. He serves as a court supervisor, completed the Referees' Course, and contributed to the ABTO Management Committee until 2022. In 2023, Andy joined the Kent Competitions' Committee, focusing on representing officials. He played a crucial role in organising the Kent Officials' Network, fostering collaboration and leading discussions. Andy's role model qualities are evident in his calm and assertive approach to on-court issues, providing fair decisions. His innovation shines through in resolving challenges for event and player benefits. Additionally, Andy initiated an Officials Mentoring Scheme, showcasing ongoing commitment to learning and inclusivity.



### Graham Silvester

Graham, a LTA Grade 1 Licensed Official, has demonstrated an exceptional commitment to tennis. As a Referee, Tournament Director, ABTO Mentor, and LTA Tutor, he excels in organising grade 1, 2, and 3 events, covering various age groups. Graham's notable achievements include officiating at prestigious national and international competitions, Wimbledon qualifying events, and refereeing at the Kent County Championships. Graham is a dedicated role model, always seeking ways to improve, and prioritising diversity and inclusion in tennis.





## SCHOOL OF THE YEAR

Presented by Keith Gill, Kent Tennis Board of Trustees and LTA Councillor  
The winning school will be presented with a prize from Head

### 2023 Finalists

#### Alexander McLeod Primary School

Alexander McLeod Primary School in Greenwich ensures tennis is an integral part of its curriculum and extracurricular activities, benefiting around 180 children annually. It actively engages with opportunities, incorporating tennis into the PE curriculum and organising after-school clubs. The school fosters intra/inter-competitive opportunities through seasonal competitions. With strong links to Abbey Wood Tennis Club and the LTA, the school encourages pupils to continue playing outside of school. This sustainable connection enhances community engagement, exemplified by numerous children becoming part of the local tennis club. Alexander McLeod Primary shows commitment to providing accessible and enjoyable tennis experiences for its students

#### Deal Parochial Primary School

Deal Parochial Primary School, led by Karen Hodgson, has made tennis an integral part of its culture. Karen's passion has created inclusive opportunities, offering curriculum tennis, inclusive sessions for confidence building, and extensive after-school clubs reaching 54 children. The school actively engages in local competitions, festivals, and trips, fostering values like self-confidence and teamwork. With strong links to local LTA-accredited coaches and venues, including Tides Leisure Centre and Walmer LTC, Deal Parochial demonstrates sustained community engagement. Karen's role as an accredited Level 2 coach contributes to free court usage, equipment loans, and collaborative events, promoting tennis within and beyond the school.

#### Mundella Primary School

Mundella Primary School has demonstrated a sustained commitment to tennis by incorporating coaching into the curriculum for all pupils in years 1-6. The school, in collaboration with CH Tennis, offers year-round tennis sessions during curriculum time, including a tennis breakfast club once a week, enhancing attendance and focus. The school promotes tennis through a free after-school club, making the sport accessible to a wide range of students. Mundella actively participates in local tennis festivals and racket sports competitions, showing their commitment to providing intra/inter-competitive opportunities. The school's strong and sustainable links with CH Tennis ensure continued access to quality coaching, despite funding challenges, exemplifying their dedication to tennis development.



# UNIVERSITY OF THE YEAR

Presented by Keith Gill, Kent Tennis Board of Trustees and LTA Councillor

## 2023 Winner

### The University of Kent

The University of Kent Tennis significantly expanded its tennis initiatives for students, staff, and the wider community in 2023. The student-run society offers a diverse range of engaging tennis sessions for all abilities, with successful teams in British Universities and Colleges Sport leagues. Tennis Development Manager Nick Skelton and the student committee enhance community outreach, promoting staff welfare and attracting participants from Canterbury and beyond. They offer innovative female-only LTA Level 1 Coaching courses, providing work opportunities for students. The vibrant culture, led by the committee, fosters teamwork, inclusivity, and a healthy balance between academic and social aspects, making tennis accessible to all.



# TENNIS FOR ALL AWARD

Presented by Keith Gill, Kent Tennis Board of Trustees and LTA Councillor

## 2023 Finalists

### Sundridge Park Padel Inclusive Programme

The Sundridge Park Club has been a pioneering force in bringing tennis, specifically Padel, to under-represented groups and communities. The club established a disability and mental health programme after successful trial sessions and secured a grant from the LTA Foundation. The programme aims to increase participation, social belonging, and health and well-being. By networking with national and local charities, schools, and organisations, the club has provided tailored coaching for over 50 participants, creating an inclusive atmosphere. The club's innovative approach, supported by Access Sport, and the use of technology makes tennis accessible to diverse players, inspiring positive change in mental well-being and fostering a welcoming community.



### Whitstable LTC

Whitstable Lawn Tennis Club (WLTC) has demonstrated exceptional commitment to inclusion in tennis, fostering a diverse and accessible programme over the past year. The club has actively addressed barriers such as sensory, dementia, age, limited mobility, and learning or physical disabilities. Through weekly outreach sessions to day centres, dementia-friendly tennis in care facilities, and wheelchair tennis sessions, WLTC has made tennis accessible to all, transcending traditional limitations. The innovative, person-centred approach, including sensory training and specialised equipment, has inspired positive change, creating a safe and welcoming atmosphere. WLTC's dedication to breaking down barriers has had a profound impact, influencing inclusion programmes nationally.





# CONNECTING COMMUNITIES

Presented by Mary Evans, Kent Tennis President

## 2023 Finalists

### Infinity Tennis

Gavid, through Infinity Tennis, has significantly impacted tennis engagement in Thanet, overcoming economic challenges with innovative programmes. Initiatives like open days, Future Champions, and Rusty Rackets have made tennis accessible in a non-traditional tennis area. The coaching programme, expanding across five clubs, has revitalised facilities and inspired coaches from the community. In a region with high youth unemployment, Gavid's commitment creates positive social impact, transforming lives and offering opportunities. His inclusive approach, supporting mental health with various tennis formats, demonstrates a deep understanding of community needs. Gavid's personal touch, seen in his support for a child with a heart condition, makes tennis safe, welcoming, and fun.



### Whitstable LTC

WLTC has made outstanding contributions to providing tennis opportunities within the community, focusing on inclusivity and accessibility. Their innovative disability programme covers various aspects, including walking, wheelchair, limited mobility, dementia-friendly, seated, sensory, and tennis for individuals with physical and learning disabilities. Through outreach sessions to day centres and care homes, WLTC has successfully engaged those facing barriers like transportation, support staff limitations, or anxiety. The community-driven initiative has demonstrated positive social impact, fostering improved physical and mental well-being, reduced social isolation, and a fun, inclusive playing environment. WLTC's commitment to inclusivity has garnered recognition and serves as a valuable resource for coaches nationwide.



# PARKS AWARD

Presented by Mary Evans, Kent Tennis President

## 2023 Finalists

### Marke Wood Tennis Hub

The Marke Wood Tennis Hub, situated in Walmer's Park setting, stands out for its remarkable achievements. Following the renovation of four courts in early 2023, the hub, registered with the LTA, attracted over 355 users. Offering affordable tennis opportunities, the hub's coaching initiatives have engaged players from diverse backgrounds, leading to increased participation and the development of tennis volunteers. Through community events, school partnerships, and initiatives like free coaching for Ukrainians, the hub has fostered inclusivity. With a sustainable future, the hub's success is reflected in its sold-out annual passes, numerous bookings, and an expanding range of programmes, emphasising a welcoming and environmentally conscious environment.



### TwistFizz – Eltham Park South

TwistFizz has revitalised tennis in the community, transforming neglected courts into a thriving hub. With extensive refurbishments, it offers floodlit play, coaching, team events, and free play, engaging the community through inclusive decision-making with a diverse steering group. The introduction of the LTA Prime Video Girls' programme resulted in a significant rise in girls participating, while a summer programme and school initiatives reached over 400 children. TwistFizz's commitment to inclusivity and diversity includes training young leaders and collaborating with local organisations, fostering a welcoming and safe environment. The emphasis on environmental sustainability further enhances the positive impact.



# CHARLES BAILEY AWARD FOR LIFETIME ACHIEVEMENT

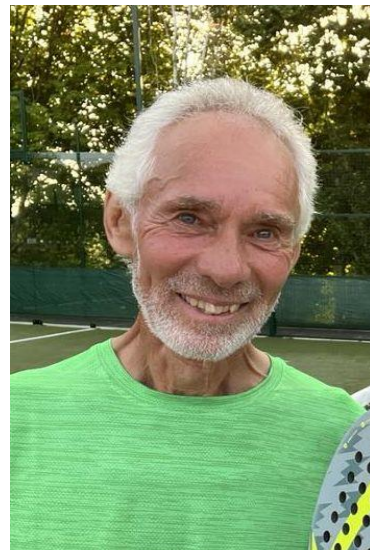
Presented by Mary Evans, Kent Tennis President

## 2023 Finalists

### Mike Bruce

(Wye LTC)

Mike Bruce, a tennis coach for nearly three decades in Ashford, has been a trailblazer in promoting tennis accessibility. His coaching spans all ages, fostering inclusivity and inspiring notable coaches. His dedication to introducing tennis to people from diverse backgrounds, including deprived communities, reflects a commitment to accessibility. At Wye Tennis Club, he exemplifies excellent teamwork, creating a harmonious coaching environment. Beyond coaching skills, Mike instils a love for the game, contributing significantly to tennis growth in SE Kent. His open-mindedness and adaptability ensure he stays at the forefront of the sport's developments. Mike Bruce's enduring impact on the tennis community merits recognition.



### Stephen Woodley

(Canterbury Indoor Tennis Centre & Canterbury LTC)

Stephen Woodley has been a tennis stalwart in Canterbury and East Kent for 50 years. Beyond remarkable playing achievements, including representing GB, he transformed tennis in East Kent. As a key figure at Canterbury LTC and Polo Farm Sports Club, he spearheaded facility developments, ensuring top-notch courts and establishing indoor facilities. Stephen's leadership made tennis accessible, hosting programmes for juniors, integrating wheelchair tennis, and fostering community engagement. The Junior Academy thrives at all levels and includes an out-reach programme to schools assisted via the "Give it your Max" programme. His open-mindedness and adaptability are evident in sustaining and expanding the sport's reach. At 85, Stephen remains a beacon in the tennis community, embodying a lifetime of exceptional service. What a wonderful tennis person who has done so much for opening up our game.



# Thanks

## Thanks to the Awards Panel

Chair: Mary Evans

John Ratcliffe, Vanessa Webb, Keith Gill, Siobhan Butler,  
Janice White, Andy Candler and Emma Nelson

## Thanks to the Organisers of the Awards Dinner

Mary Evans, Janice White and Emma Nelson

## Thanks to our Sponsors

**Trevor May Contractors** who donate the prizes for:

Club of the Year 1-4 courts

Club of the Year 5+ courts



**HEAD** who donate the prize for School Award winner

# HEAD<sup>®</sup>

**East West Connect Ltd** who support  
Kent Tennis Junior Players

